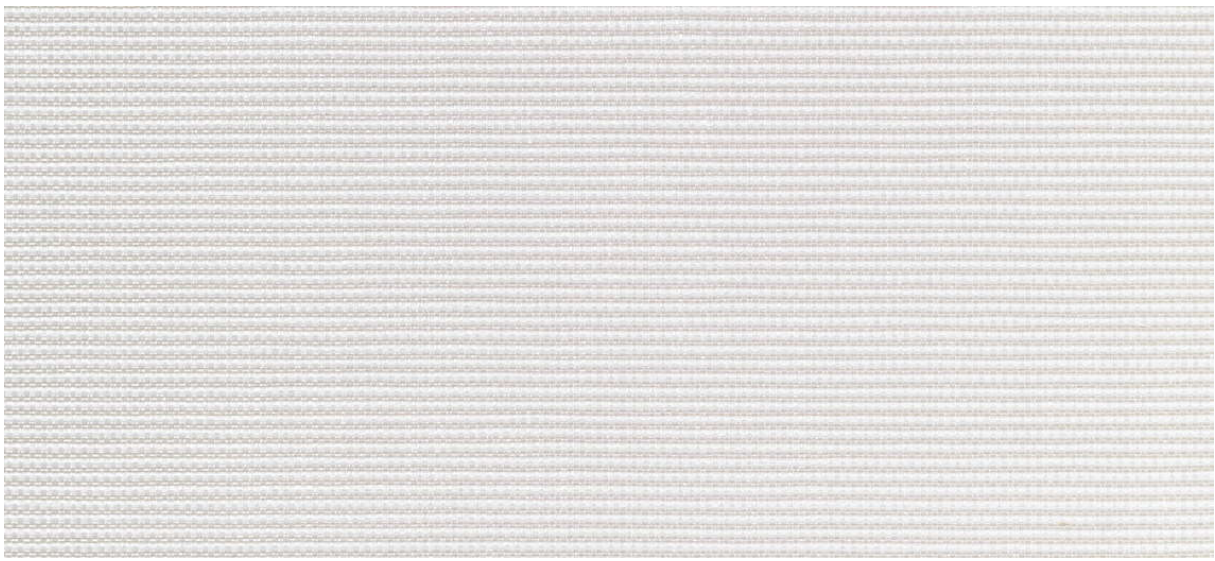


# flash back

2540.01 - 2540.14



Kollektion  
**wallcovering**  
**textile**  
**xorel**

Beschreibung  
**Dobbygewebe semi-uni**

Zusammensetzung  
**100% Xorel® (Polyethylen) (77%  
biobasiertes Polyethylen, 23% Polyethylen)  
auf x-protect wall™ (Papierrücken)**

Breite  
**± 132 cm, ± 52 inches**

Gewicht  
**± 320 gr/m<sup>2</sup>, ± 14 oz/yd<sup>1</sup>**

Brandschutzklasse  
**EN 13501, B s1 d2**  
**ASTM E84, A**

Wasserdampfdurchlässigkeit  
**ISO 15106-3 / EN ISO 12572**  
Sd Wert <0,5 m

Weitere Informationen  
**cradle to cradle gold certified**

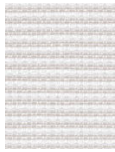
**Xorel is a registered trademark and license  
to distribute is granted by permission of  
Carnegie Fabrics Inc. US**



# flash back

2540.01 - 2540.14

---



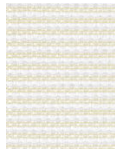
2540.07



2540.05



2540.02



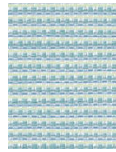
2540.03



2540.08



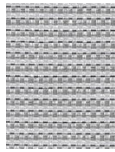
2540.12



2540.13



2540.14



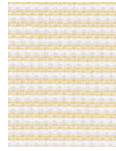
2540.09



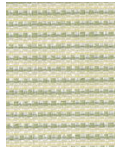
2540.06



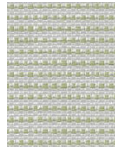
2540.04



2540.01



2540.10



2540.11