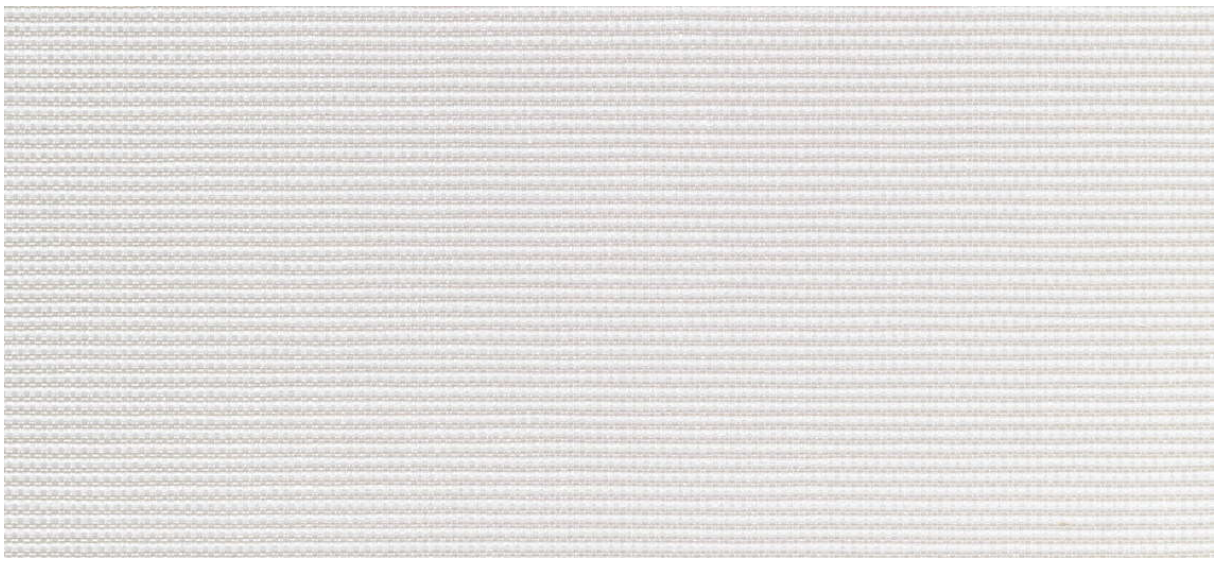


# flash back

2540.01 - 2540.14



colección

**wallcovering  
textile  
xorel**

descripción

**tejido dobby semi-uni**

composición

**100% xorel® (polietileno) (77% polietileno de base biológica, 23% polietileno) en x-protect wall™ (respaldo en papel)**

ancho

**± 132 cm, ± 52 inches**

peso

**± 320 gr/m<sup>2</sup>, ± 14 oz/yd<sup>1</sup>**

combustión retardada

**EN 13501, B s1 d2**

**ASTM E84, A**

permeabilidad al vapor de agua

**ISO 15106-3 / EN ISO 12572**

Sd value <0,5 m

información adicional

**cradle to cradle gold certified**

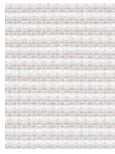
**Xorel is a registered trademark and license to distribute is granted by permission of Carnegie Fabrics Inc. US**



# flash back

2540.01 - 2540.14

---



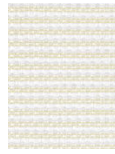
2540.07



2540.05



2540.02



2540.03



2540.08



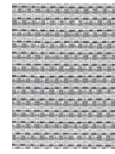
2540.12



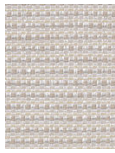
2540.13



2540.14



2540.09



2540.06



2540.04



2540.01



2540.10



2540.11