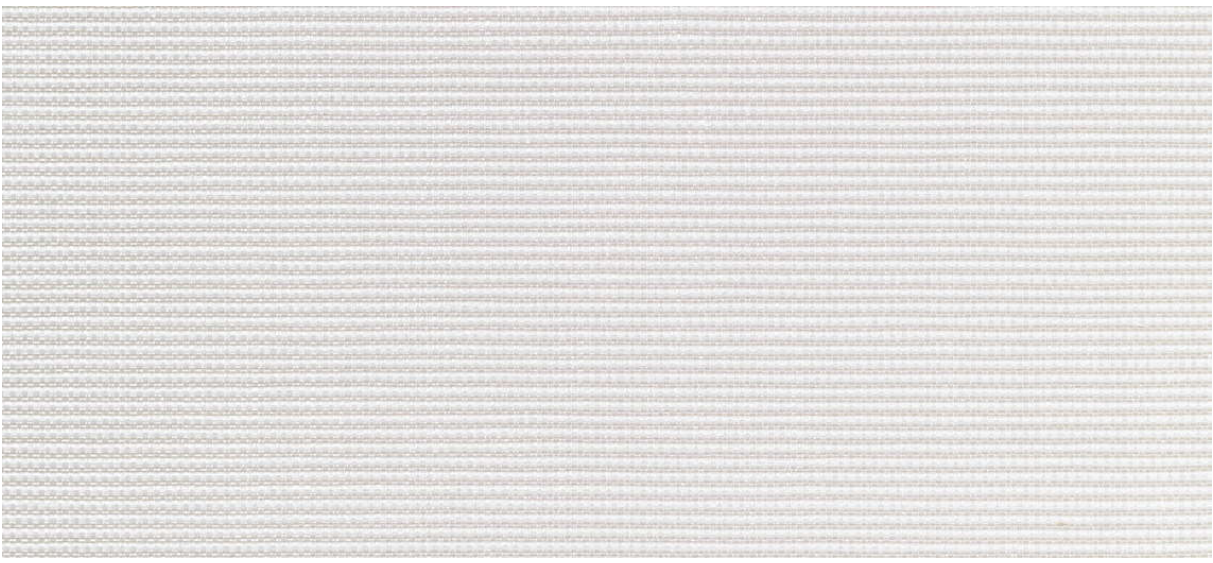


flash back

2540.01 - 2540.14



collection

wallcovering
textile
xorel

description

tissu **dobby semi-uni**

composition

**100% xorel® (polyéthylène) (77%)
polyéthylène biobasé, 23%
polyéthylène) on x-protect wall™ (paper
backing)**

largeur

± 132 cm, ± 52 inches

poids

± 320 gr/m², ± 14 oz/yd¹

non feu

EN 13501, B s1 d2

ASTM E84, A

perméabilité à la vapeur d'eau

ISO 15106-3 / EN ISO 12572

Sd value <0,5 m

informations complémentaires

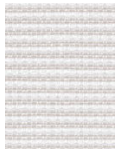
cradle to cradle gold certified

**Xorel is a registered trademark and license
to distribute is granted by permission of
Carnegie Fabrics Inc. US**

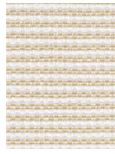


flash back

2540.01 - 2540.14



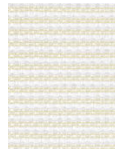
2540.07



2540.05



2540.02



2540.03



2540.08



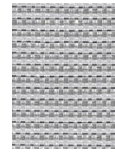
2540.12



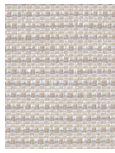
2540.13



2540.14



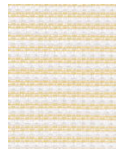
2540.09



2540.06



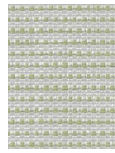
2540.04



2540.01



2540.10



2540.11