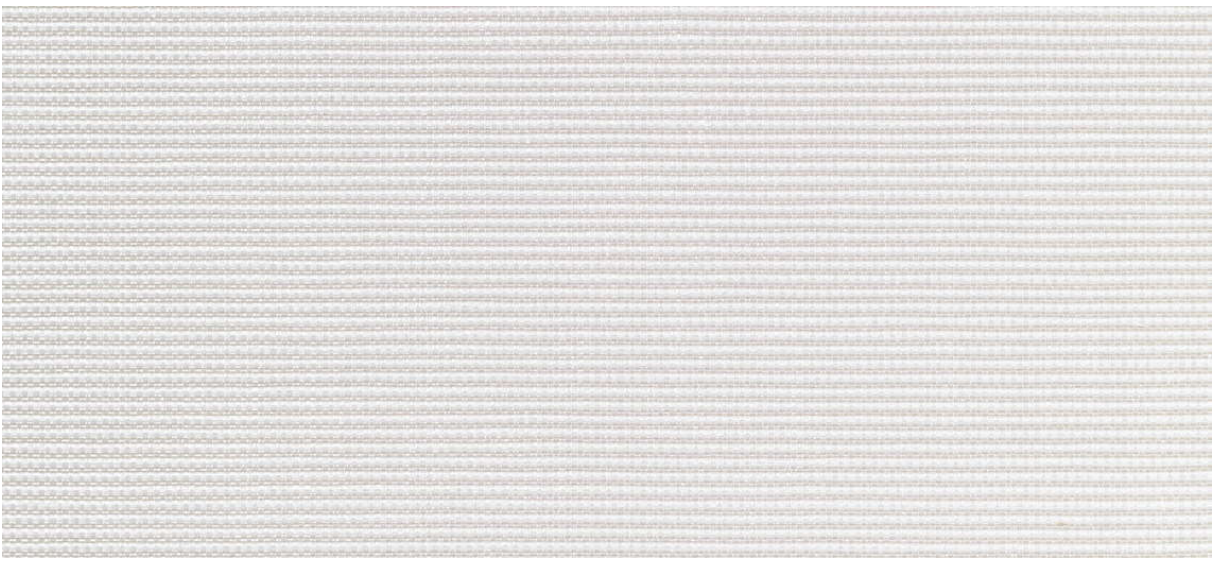


flash back

2540.01 - 2540.14



collezione
wallcovering
textile
xorel

descrizione
tessuto doobby semi-uni

composizione
100% xorel® (polietilene) (77% polietilene di tipo biologico, 23% polietilene) su x-protect wall™ (supporto in carta)

altezza
± 132 cm, ± 52 inches

peso
± 320 gr/m², ± 14 oz/yd¹

resistenza al fuoco
EN 13501, B s1 d2
ASTM E84, A

permeabilità al vapore acqueo
ISO 15106-3 / EN ISO 12572
Sd value <0,5 m

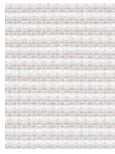
informazioni supplementari
cradle to cradle gold certified

Xorel is a registered trademark and license to distribute is granted by permission of Carnegie Fabrics Inc. US



flash back

2540.01 - 2540.14



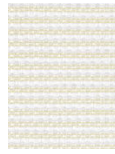
2540.07



2540.05



2540.02



2540.03



2540.08



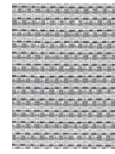
2540.12



2540.13



2540.14



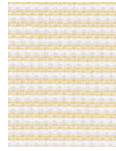
2540.09



2540.06



2540.04



2540.01



2540.10



2540.11