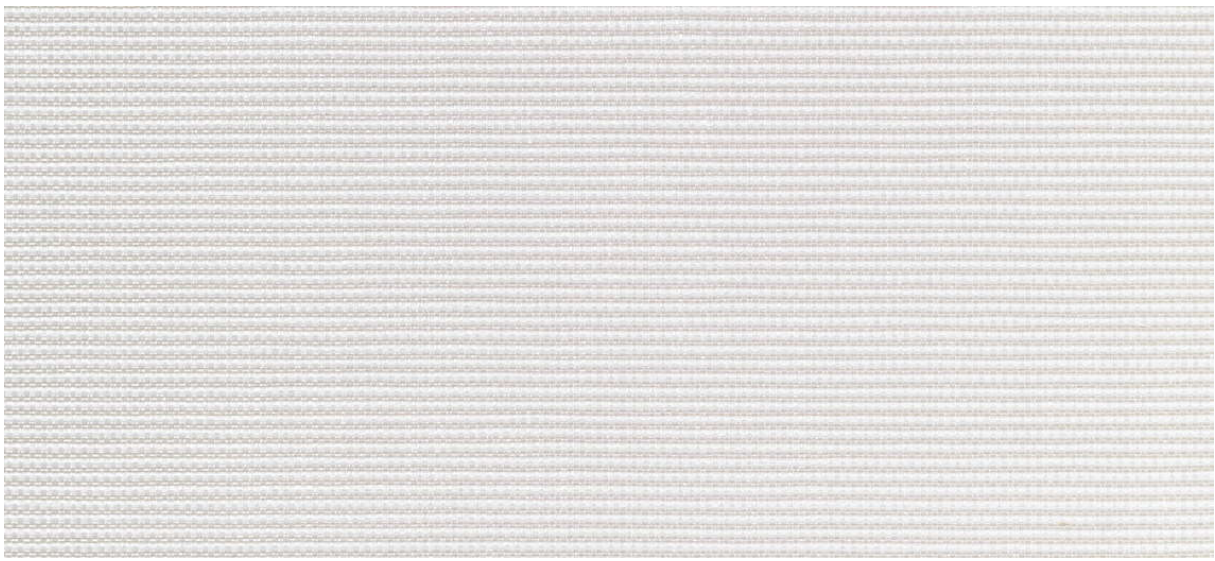


# flash back

2540.01 - 2540.14



coleção

wallcovering  
textile  
xorel

descrição

tecido "dobby" semiliso

composição

**100% xorel® (polietileno) (77% polietileno de base biológica, 23% polietileno ) em x-protect wall™ (suporte de papel)**

largura

± 132 cm, ± 52 inches

gramagem

± 320 gr/m<sup>2</sup>, ± 14 oz/yd<sup>1</sup>

resistência ao fogo

**EN 13501, B s1 d2**

**ASTM E84, A**

permeabilidade ao vapor de água

**ISO 15106-3 / EN ISO 12572**

Sd value <0,5 m

informações complementares

**cradle to cradle gold certified**

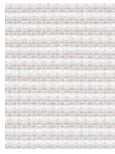
**Xorel is a registered trademark and license to distribute is granted by permission of Carnegie Fabrics Inc. US**



# flash back

2540.01 - 2540.14

---



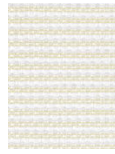
2540.07



2540.05



2540.02



2540.03



2540.08



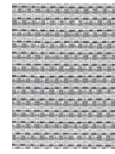
2540.12



2540.13



2540.14



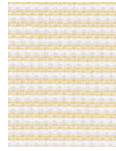
2540.09



2540.06



2540.04



2540.01



2540.10



2540.11