

# boyd

1067.01 - 1067.21



colección  
**wallcovering**  
**vinyl**

descripción  
**marcada estructura «embaldosada»**

composición  
**capa vinílica estampada con tintas al agua,  
sobre soporte de algodón**

ancho  
**± 130 cm, ± 51 inches**

peso  
**± 800 gr/m<sup>2</sup>, ± 34 oz/yd<sup>1</sup>**

combustión retardada  
**EN 13501, B s2 d0**  
**ASTM E84, A**  
**NFPA 286**

permeabilidad al vapor de agua  
**ISO 15106-3 / EN ISO 12572**  
Sd value ± 10 m

**vinyl**   
COMMITTED TO  
SUSTAINABLE DEVELOPMENT

**CE** EN 15102



# boyd

1067.01 - 1067.21

---



1067.21



1067.18



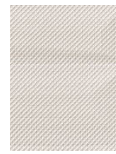
1067.14



1067.12



1067.02



1067.04



1067.01



1067.05



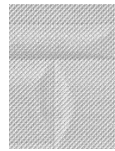
1067.09



1067.20



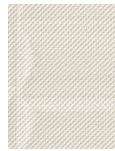
1067.17



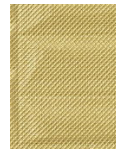
1067.15



1067.03



1067.06



1067.10



1067.11



1067.07



1067.08



1067.16



1067.19



1067.13