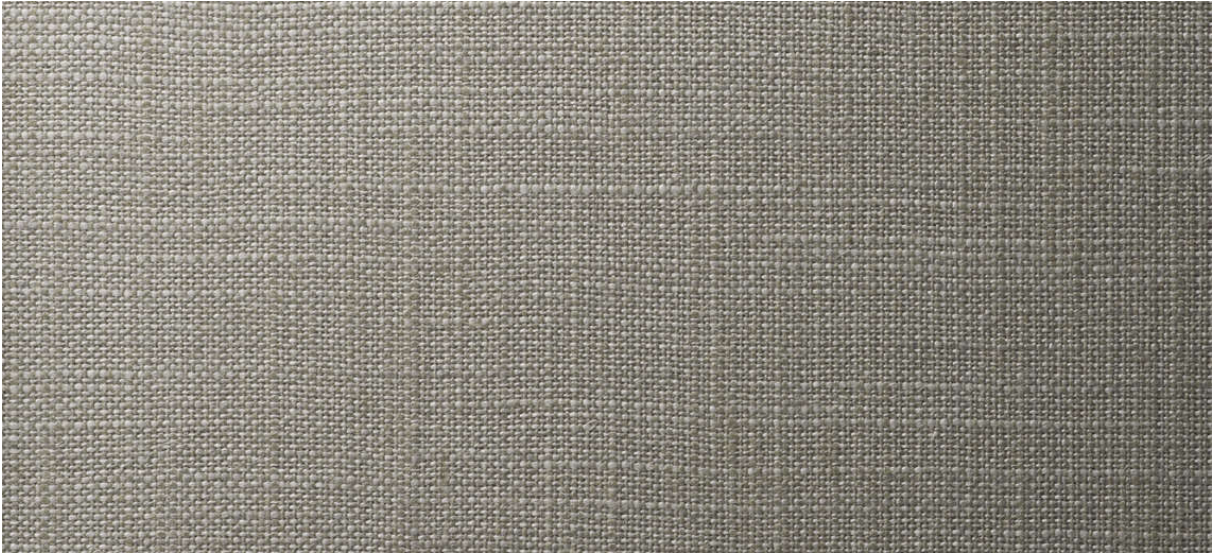


# brittany

2615.30 - 2615.39



colección  
**wallcovering  
textile**



descripción  
**estructura uni lino**

composición  
**65% viscosa / 35% lino en soporte de papel**

ancho  
**± 137 cm, ± 54 inches**

peso  
**± 409 gr/m<sup>2</sup>, ± 18 oz/yd<sup>1</sup>**

combustión retardada  
**EN 13501, B s1 d0  
ASTM E84, A**

permeabilidad al vapor de agua  
**ISO 15106-3 / EN ISO 12572**  
Sd value <0,5 m

# brittany

2615.30 - 2615.39

---



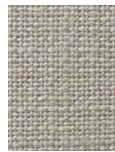
2615.37



2615.32



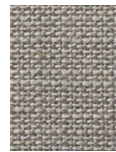
2615.34



2615.31



2615.33



2615.36



2615.35



2615.30



2615.38



2615.39