

palena

1070.01 - 1070.19



coleção
wallcovering
vinyl

descrição
estrutura espinha de peixe ("herringbone")

composição
camada vinílica estampada com tintas à base de água e base de algodão

largura
± 130 cm, ± 51 inches

gramagem
± 550 gr/m², ± 23 oz/yd¹

resistência ao fogo
EN 13501, B s2 d0
ASTM E84, A
NFPA 286

permeabilidade ao vapor de água
ISO 15106-3 / EN ISO 12572
Sd value ± 9,5 m



palena

1070.01 - 1070.19



1070.01



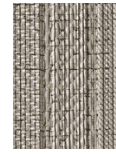
1070.02



1070.03



1070.04



1070.05



1070.06



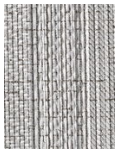
1070.07



1070.08



1070.09



1070.10



1070.11



1070.12



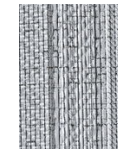
1070.13



1070.14



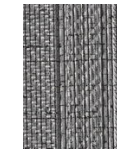
1070.15



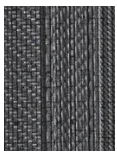
1070.16



1070.17



1070.18



1070.19