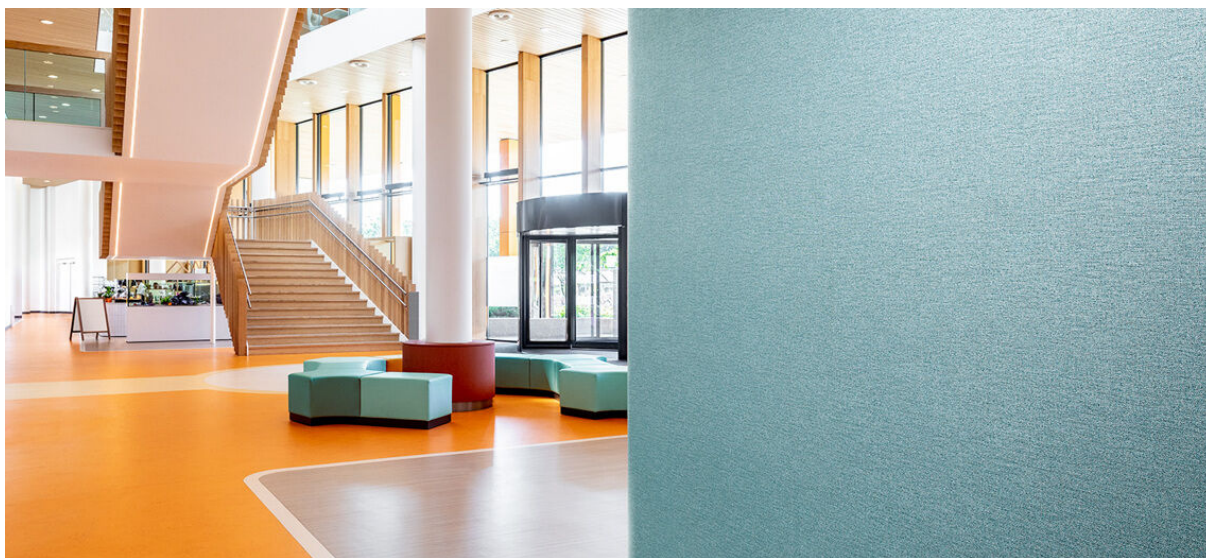


millwood

1077.01 - 1077.29



collezione
**wallcovering
vinyl**

descrizione
effetto lino irregolare a 3 colori

composizione
**tessuto in puro cotone con spalmatura di
monomeri vinilici completamente
polimerizzati, stampato con inchiostri a base
acquosa**

altezza
± 130 cm, ± 51 inches

peso
± 350 gr/m², ± 15 oz/yd¹

assorbimento del suono
ISO 354, alphaw 0.10

resistenza al fuoco
**EN 13501, B s1 d0
IMO 2010 FTP part 2-5
ASTM E84, A
NFPA 286**

permeabilità al vapore acqueo
ISO 15106-3 / EN ISO 12572
Sd value ± 9 m



vinyl COMMITTED TO
SUSTAINABLE DEVELOPMENT

CE EN 15102

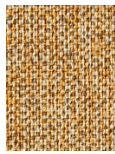


millwood

1077.01 - 1077.29



1077.01



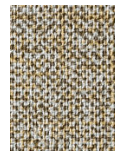
1077.02



1077.03



1077.04



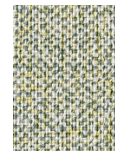
1077.05



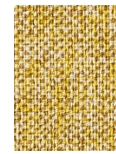
1077.06



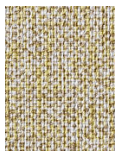
1077.07



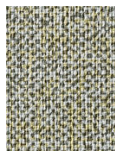
1077.08



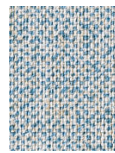
1077.09



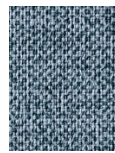
1077.10



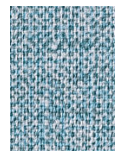
1077.11



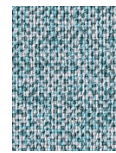
1077.12



1077.13



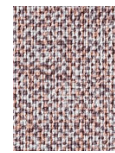
1077.14



1077.15



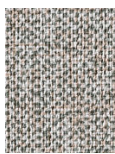
1077.16



1077.17



1077.18



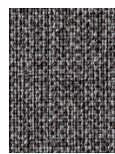
1077.19



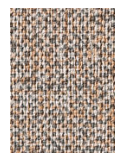
1077.20



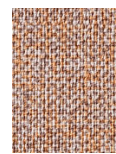
1077.21



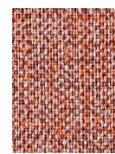
1077.22



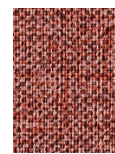
1077.23



1077.24



1077.25



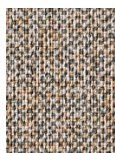
1077.26



1077.27



1077.28



1077.29