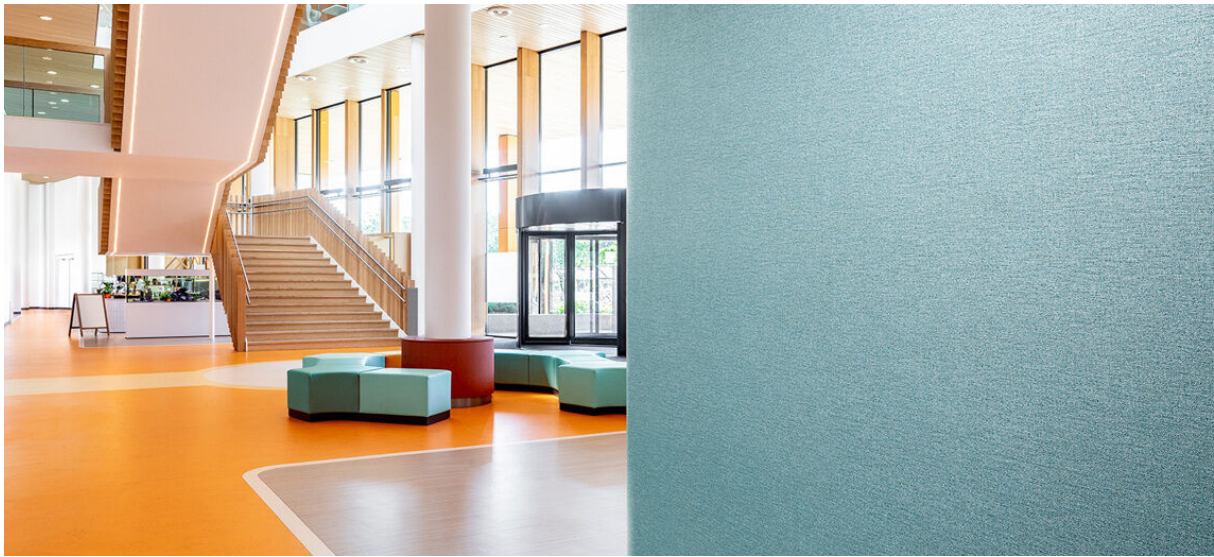


millwood

1077.01 - 1077.29



collection

wallcovering
vinyl

description

three-coloured irregular linen look

composition

**100% type II vinyl finishing coat on a
scrim/osnaburg backing**

width

± 52-54 inches, ± 132-137 cm

weight

± 20 oz/yd¹, ± 460 gr/m²

sound absorption

ISO 354, alphaw 0.10

flame retardancy

ASTM E84, A

NFPA 286

EN 13501, B s2 d0

colorfastness to light

CCC-W-408D

ISO 105-B02, 8 (scale 1 - 8)

CAL 01350 (2010 CDPH Standard)
solvent free
non-phthalate



Certified
NSF/ANSI 342
Sustainable Wallcovering



vinyl COMMITTED TO
SUSTAINABLE DEVELOPMENT

CE EN 15102

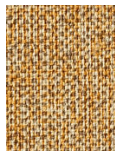


millwood

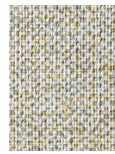
1077.01 - 1077.29



1077.01



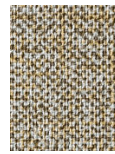
1077.02



1077.03



1077.04



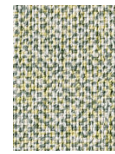
1077.05



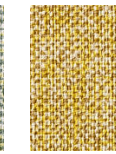
1077.06



1077.07



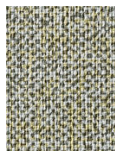
1077.08



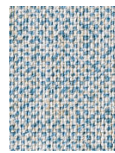
1077.09



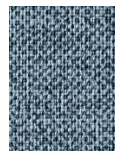
1077.10



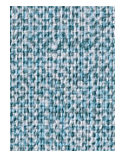
1077.11



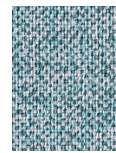
1077.12



1077.13



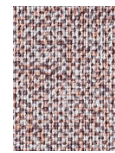
1077.14



1077.15



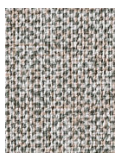
1077.16



1077.17



1077.18



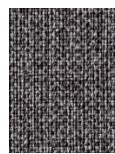
1077.19



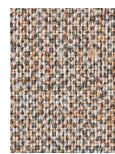
1077.20



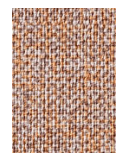
1077.21



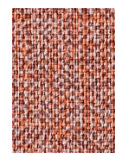
1077.22



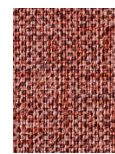
1077.23



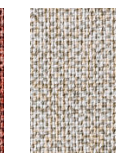
1077.24



1077.25



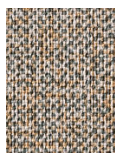
1077.26



1077.27



1077.28



1077.29