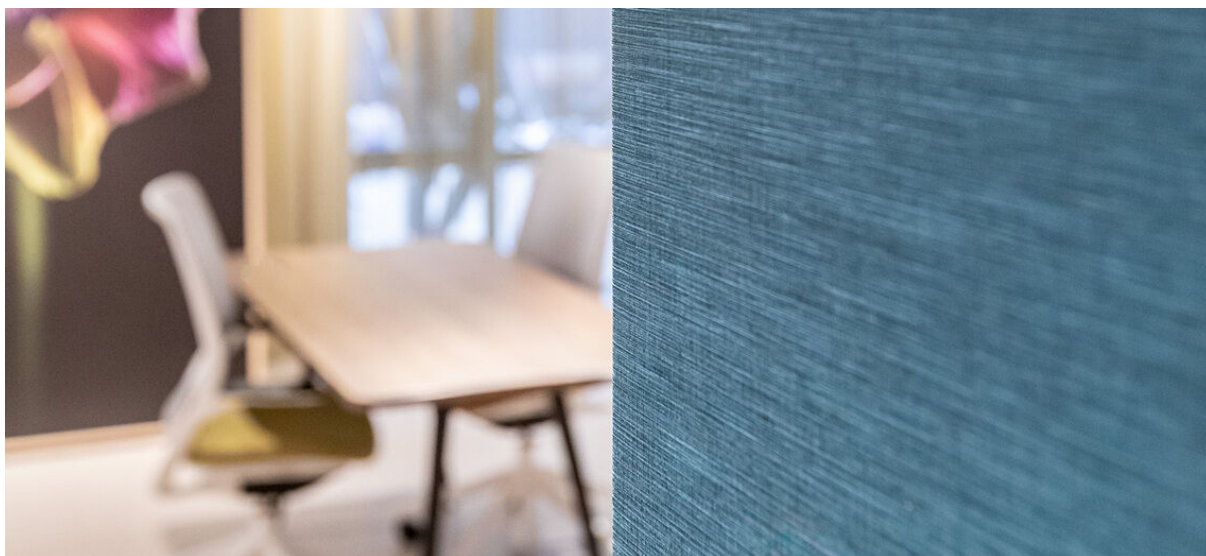


# florence

1081.01 - 1081.30



colección  
**wallcovering  
vinyl**

descripción  
**rico aspecto sedoso en multicolor y tono  
sobre tono**

composición  
**capa vinílica estampada con tintas al agua,  
sobre soporte de algodón**

ancho  
**± 130 cm, ± 51 inches**

peso  
**± 350 gr/m<sup>2</sup>, ± 15 oz/yd<sup>1</sup>**

absorción del ruido  
**ISO 354, alphaw 0.10**

combustión retardada  
**EN 13501, B s1 d0  
IMO 2010 FTP part 2-5  
ASTM E84, A  
NFPA 286**

insensibilidad a la luz  
**ISO 105-B02  
8 (escala 1-8)  
CCC-W-408D**

permeabilidad al vapor de agua  
**ISO 15106-3 / EN ISO 12572  
Sd value ± 9 m**



**vinyl** COMMITTED TO  
SUSTAINABLE DEVELOPMENT

**CE** EN 15102



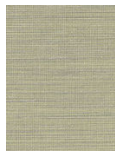
# florence

1081.01 - 1081.30

---



1081.01



1081.02



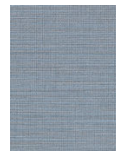
1081.03



1081.04



1081.05



1081.06



1081.07



1081.08



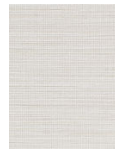
1081.09



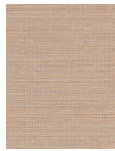
1081.10



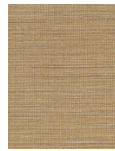
1081.11



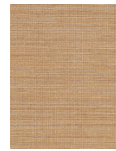
1081.12



1081.13



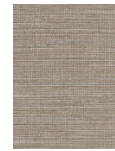
1081.14



1081.15



1081.16



1081.17



1081.18



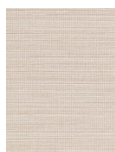
1081.19



1081.20



1081.21



1081.22



1081.23



1081.24



1081.25



1081.26



1081.27



1081.28



1081.29



1081.30