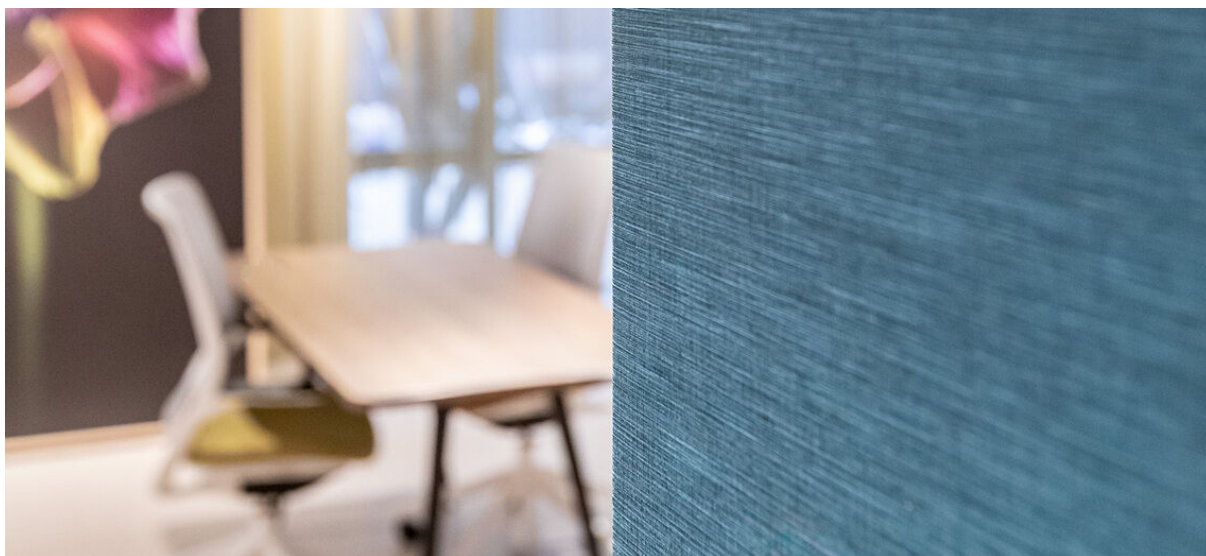


florence

1081.01 - 1081.30



collection
**wallcovering
vinyl**

description
**un aspect soyeux riche en ton-sur-ton et
multicolore**

composition
**couche vinyle, impression au moyen
d'encres à base d'eau, support en coton**

largeur
± 130 cm, ± 51 inches

poids
± 350 gr/m², ± 15 oz/yd¹

absorption acoustique
ISO 354, alphaw 0.10

non feu
**EN 13501, B s1 d0
IMO 2010 FTP part 2-5
ASTM E84, A
NFPA 286**

solidité lumière
**ISO 105-B02
8 (échelle 1-8)
CCC-W-408D**

perméabilité à la vapeur d'eau
ISO 15106-3 / EN ISO 12572

Sd value ± 9 m



vinyl COMMITTED TO
SUSTAINABLE DEVELOPMENT

CE EN 15102

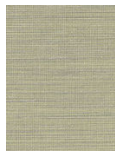


florence

1081.01 - 1081.30



1081.01



1081.02



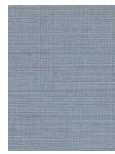
1081.03



1081.04



1081.05



1081.06



1081.07



1081.08



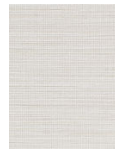
1081.09



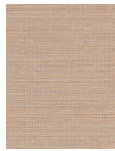
1081.10



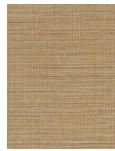
1081.11



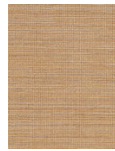
1081.12



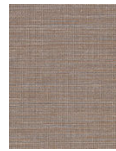
1081.13



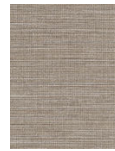
1081.14



1081.15



1081.16



1081.17



1081.18



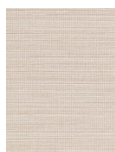
1081.19



1081.20



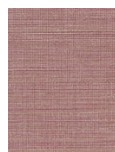
1081.21



1081.22



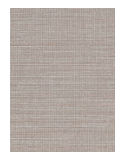
1081.23



1081.24



1081.25



1081.26



1081.27



1081.28



1081.29



1081.30