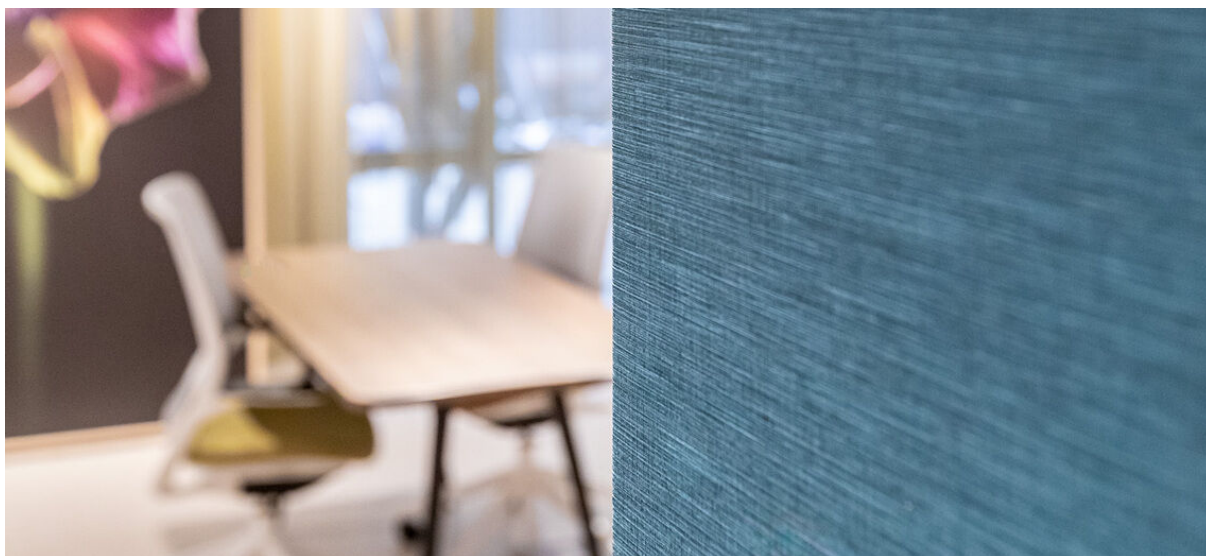


florence

1081.01 - 1081.30



系列

wallcovering
vinyl

描述

多彩及同色的华丽真丝外观

组成

布底胶面,水性涂料印染

宽度

± 130 cm, ± 51 inches

重量

± 350 gr/m², ± 15 oz/yd¹

吸声系数

ISO 354, alphaw 0.10

阻燃

EN 13501, B s1 d0
IMO 2010 FTP part 2-5
ASTM E84, A
NFPA 286

耐褪色

ISO 105—B02
8 (由 1—8)
CCC—W—408D

水蒸气渗透性

ISO 15106-3 / EN ISO 12572
Sd value ± 9 m



vinyl COMMITTED TO SUSTAINABLE DEVELOPMENT

CE EN 15102

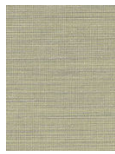


florence

1081.01 - 1081.30



1081.01



1081.02



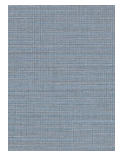
1081.03



1081.04



1081.05



1081.06



1081.07



1081.08



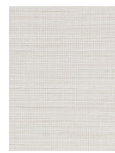
1081.09



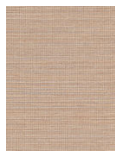
1081.10



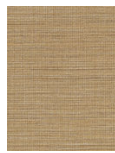
1081.11



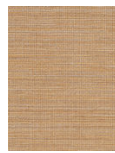
1081.12



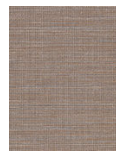
1081.13



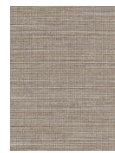
1081.14



1081.15



1081.16



1081.17



1081.18



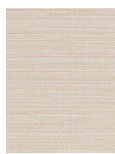
1081.19



1081.20



1081.21



1081.22



1081.23



1081.24



1081.25



1081.26



1081.27



1081.28



1081.29



1081.30