

mirabel

2618.30 - 2618.39



collection
**wallcovering
textile**

description
textured and non-woven with a subtle sheen

composition
**60% woodpulp / 40% polyester on a paper
backing**

width
± inches, ± cm

weight
± oz/yd¹, ± gr/m²

flame retardancy
**EN 13501, B s2 d0
ASTM E84, A**

colorfastness to light
ISO 105-B02, 6 (scale 1 - 8)

CE EN 15102



mirabel

2618.30 - 2618.39



2618.30



2618.31



2618.32



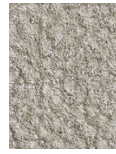
2618.33



2618.34



2618.35



2618.36



2618.37



2618.38



2618.39