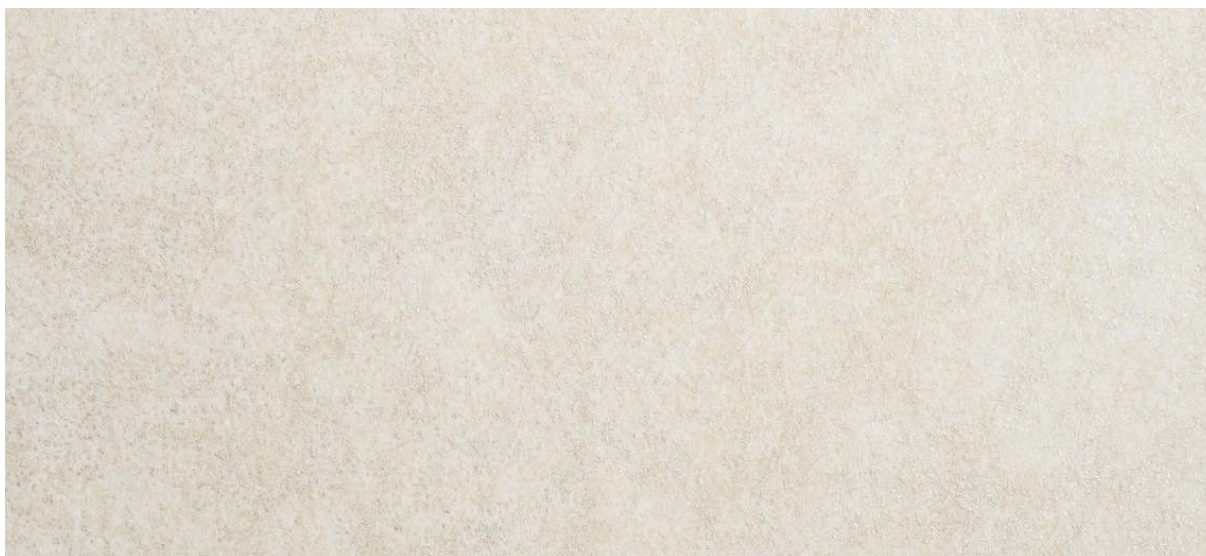


tuscany

2616.60 - 2616.69



colección
**wallcovering
textile**

descripción
**aspecto de papel con sutiles efectos
metalizados**

composición
**70% pulpa de madera / 30% poliéster en
soporte de papel**

ancho
± 137 cm, ± 54 inches

peso
± 161 gr/m², ± 7 oz/yd¹

combustión retardada
**EN 13501, B s2 d0
ASTM E84, A**

insensibilidad a la luz
ISO 105-B02, 6 (escala 1 - 8)

permeabilidad al vapor de agua
ISO 15106-3 / EN ISO 12572

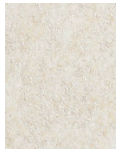
Sd value <0,5 m

CE EN 15102

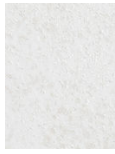


tuscany

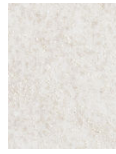
2616.60 - 2616.69



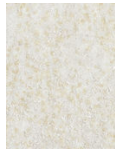
2616.60



2616.61



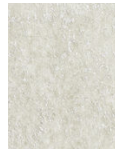
2616.62



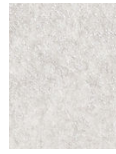
2616.63



2616.64



2616.65



2616.66



2616.67



2616.68



2616.69