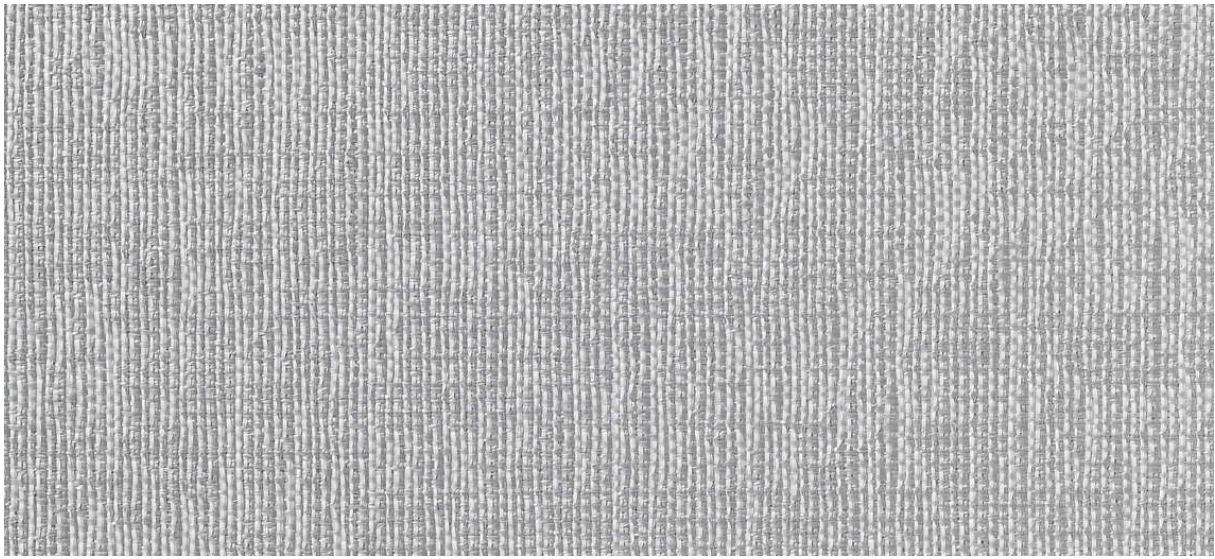


linen

2547.01 - 2547.10



collection

**wallcovering
textile
xorel**

description

une structure en lin all-over

composition

**100% ifr xorel® (polyéthylène) on
x-protect wall™ (paper backing)**

largeur

± 132 cm, ± 52 inches

poids

± 388 gr/m², ± 17 oz/yd¹

non feu

**EN 13501, B s1 d0
ASTM E84, A**

perméabilité à la vapeur d'eau

ISO 15106-3 / EN ISO 12572

Sd value <0,5 m

informations complémentaires

cradle to cradle gold certified

**Xorel is a registered trademark and license
to distribute is granted by permission of
Carnegie Fabrics Inc. US**

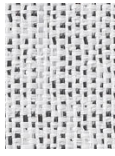


linen

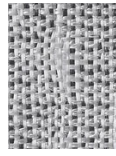
2547.01 - 2547.10



2547.01



2547.02



2547.03



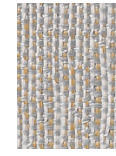
2547.04



2547.05



2547.06



2547.07



2547.09



2547.10