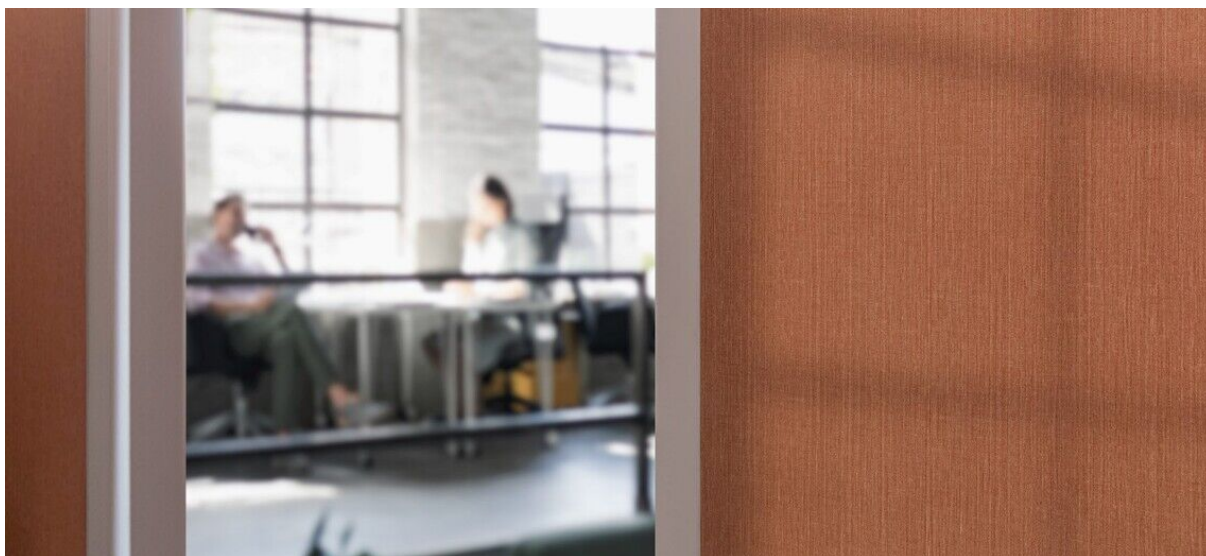


lismore

1097.01 - 1097.30



colección

**wallcovering
vinyl**

descripción

apariencia refinada de lino

composición

**capa vinílica estampada con tintas al agua,
sobre soporte de algodón**

ancho

± 130 cm, ± 51 inches

peso

± 350 gr/m², ± 15 oz/yd¹

absorción del ruido

ISO 354, alphaw 0.10

combustión retardada

EN 13501, B s1 d0

IMO 2010 FTP part 2-5

ASTM E84, A

insensibilidad a la luz

ISO 105-B02

claro 8 / oscuro 8 (escala 1 – 8)

CCC-W-408D

permeabilidad al vapor de agua

ISO 15106-3 / EN ISO 12572

Sd value ± 9 m



vinyl COMMITTED TO
SUSTAINABLE DEVELOPMENT

CE EN 15102



lismore

1097.01 - 1097.30



1097.01



1097.02



1097.03



1097.04



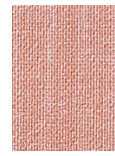
1097.05



1097.06



1097.07



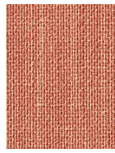
1097.08



1097.09



1097.10



1097.11



1097.12



1097.13



1097.14



1097.15



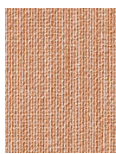
1097.16



1097.17



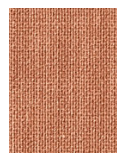
1097.18



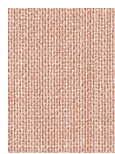
1097.19



1097.20



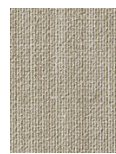
1097.21



1097.22



1097.23



1097.24



1097.25



1097.26



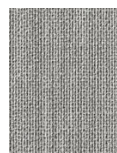
1097.27



1097.28



1097.29



1097.30