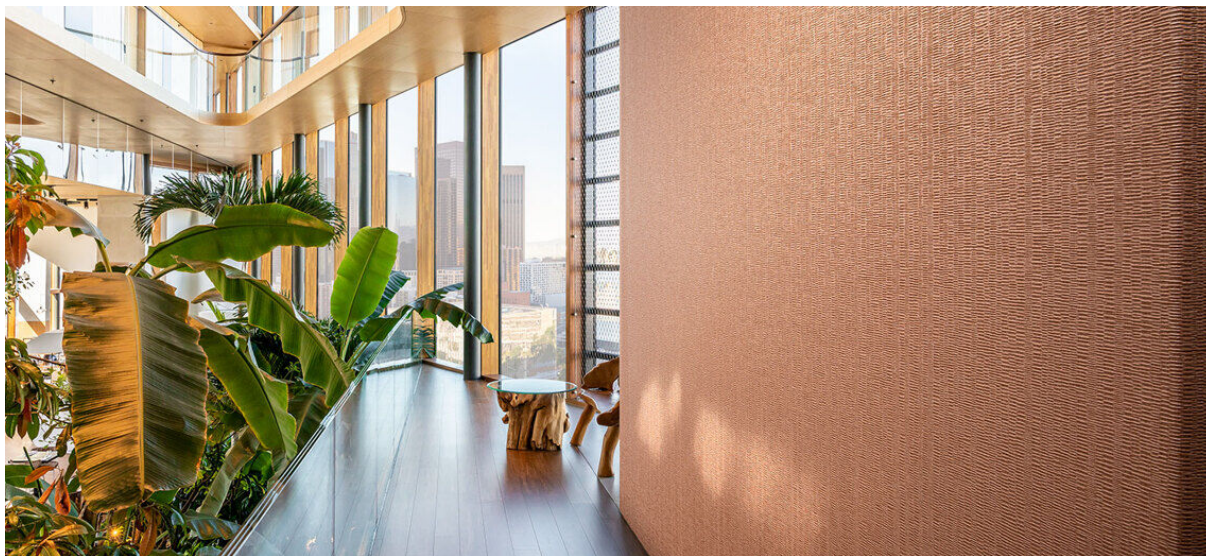


# barkley

1102.01 - 1102.24



colección  
**wallcovering  
vinyl**

descripción  
**estructura orgánica de corteza de árbol en  
tonalidades naturales**

composición  
**capa vinílica estampada con tintas al agua,  
sobre soporte de algodón**

ancho  
**± 130 cm, ± 51 inches**

peso  
**± 440 gr/m<sup>2</sup>, ± 18 oz/yd<sup>1</sup>**

absorción del ruido  
**ISO 354**  
alphaw 0.10

combustión retardada  
**EN 13501, B s2 d0**  
**ASTM E84, A**  
**NFPA 286**

insensibilidad a la luz  
**ISO 105-B02**  
8 (escala 1-8)  
**CCC-W-408D**

type II

permeabilidad al vapor de agua  
**ISO 15106-3 / EN ISO 12572**  
Sd value ± 9 m

**vinyl**   
COMMITTED TO  
SUSTAINABLE DEVELOPMENT

**CE** EN 15102



# barkley

1102.01 - 1102.24

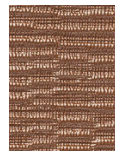
---



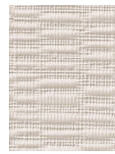
1102.01



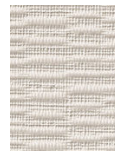
1102.02



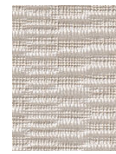
1102.03



1102.04



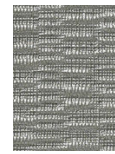
1102.05



1102.06



1102.07



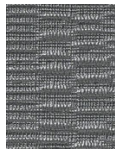
1102.08



1102.09



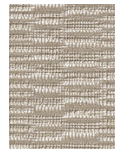
1102.10



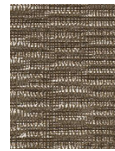
1102.11



1102.12



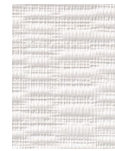
1102.13



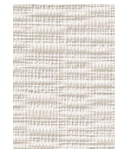
1102.14



1102.15



1102.16



1102.17



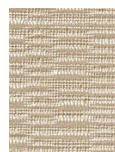
1102.18



1102.19



1102.20



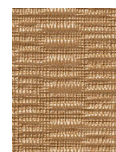
1102.21



1102.22



1102.23



1102.24