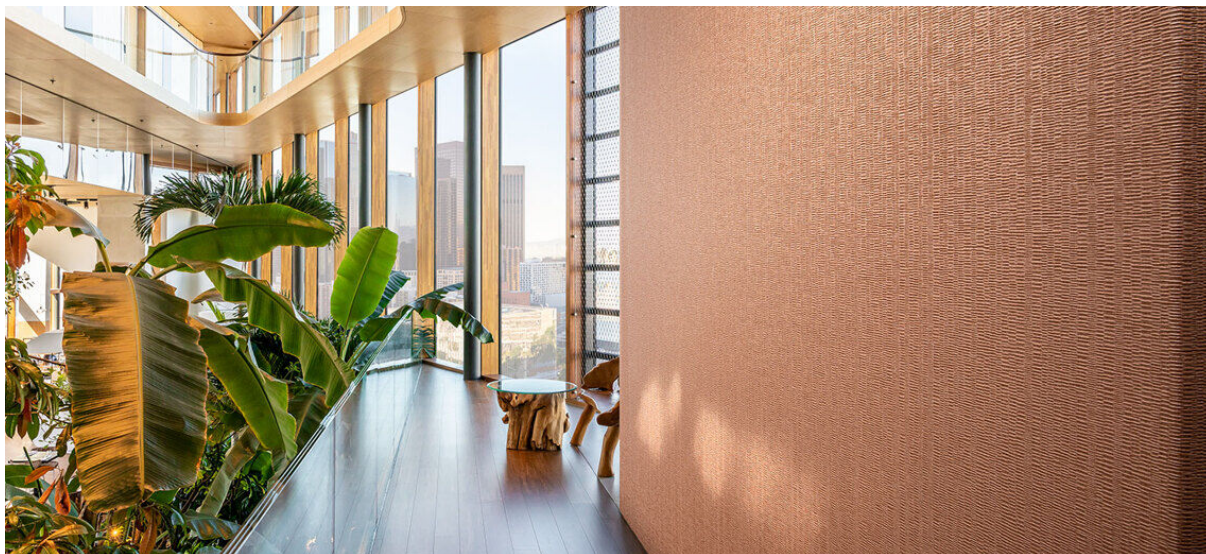


barkley

1102.01 - 1102.24



collezione
**wallcovering
vinyl**

descrizione
texture corteccia in colori naturali

composizione
**tessuto in puro cotone con spalmatura di
monomeri vinilici completamente
polimerizzati, stampato con inchiostri a base
acquosa**

altezza
± 130 cm, ± 51 inches

peso
± 440 gr/m², ± 18 oz/yd¹

assorbimento del suono
ISO 354
alphaw 0.10

resistenza al fuoco
EN 13501, B s2 d0
ASTM E84, A
NFPA 286

resistenza alla luce
ISO 105-B02
8 (scala 1-8)
CCC-W-408D
type II

permeabilità al vapore acqueo
ISO 15106-3 / EN ISO 12572
Sd value ± 9 m

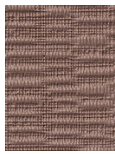
vinyl 
COMMITTED TO
SUSTAINABLE DEVELOPMENT

CE EN 15102



barkley

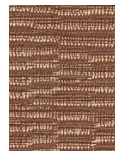
1102.01 - 1102.24



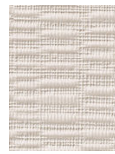
1102.01



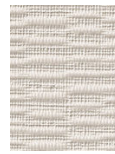
1102.02



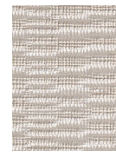
1102.03



1102.04



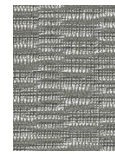
1102.05



1102.06



1102.07



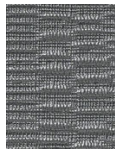
1102.08



1102.09



1102.10



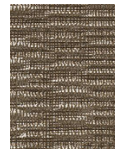
1102.11



1102.12



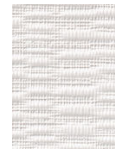
1102.13



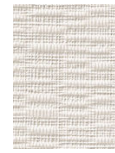
1102.14



1102.15



1102.16



1102.17



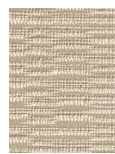
1102.18



1102.19



1102.20



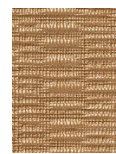
1102.21



1102.22



1102.23



1102.24