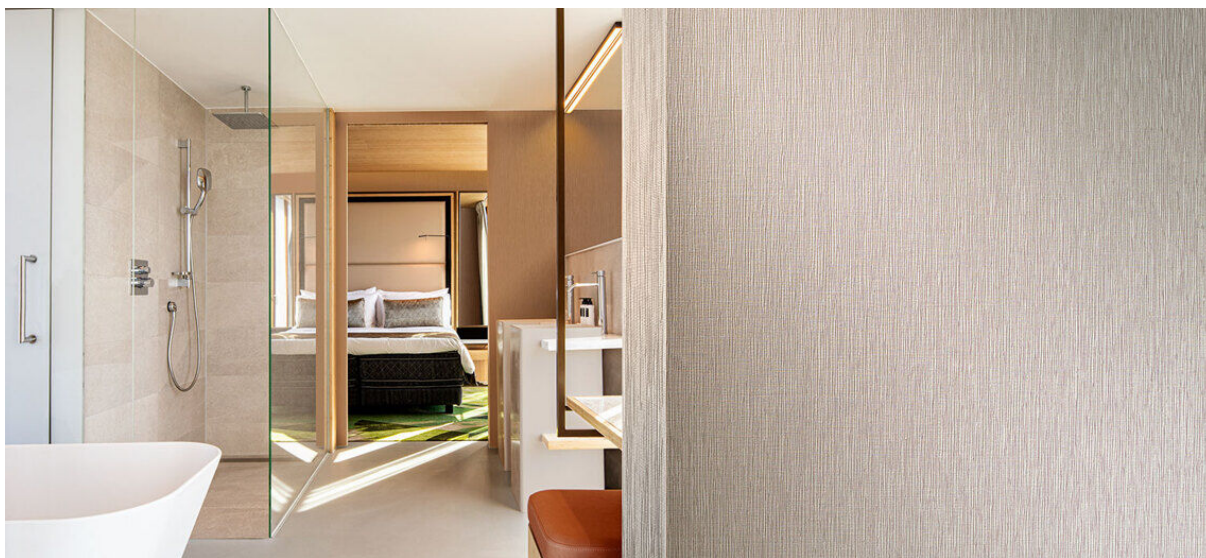


# wutai

1105.01 - 1105.14



Kollektion  
**wallcovering  
vinyl**

Beschreibung  
**Matte, vertikale, organische Maserung,  
inspiriert von Holz und Baumrinde in  
natürlichen Tönen**

Zusammensetzung  
**Vinyl-Deckschicht bedruckt mit Farben auf  
Wasserbasis, Baumwollträger**

Breite  
**± 130 cm, ± 51 inches**

Gewicht  
**± 550 gr/m<sup>2</sup>, ± 23 oz/yd<sup>1</sup>**

Brandschutzklasse  
**EN 13501, B s2 d0  
ASTM E84, A  
NFPA 286**

Lichtehtheit  
**ISO 105-B02  
8 (scale 1-8)  
CCC-W-408D**

type II

Wasserdampfdurchlässigkeit  
**ISO 15106-3 / EN ISO 12572  
Sd Wert ± 9,5 m**

**vinyl**   
COMMITTED TO  
SUSTAINABLE DEVELOPMENT

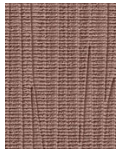
**CE** EN 15102



# wutai

1105.01 - 1105.14

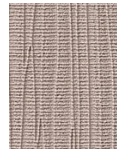
---



1105.01



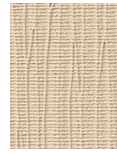
1105.02



1105.03



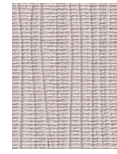
1105.04



1105.05



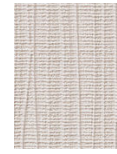
1105.06



1105.07



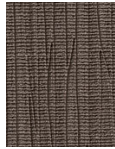
1105.08



1105.09



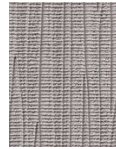
1105.10



1105.11



1105.12



1105.13



1105.14