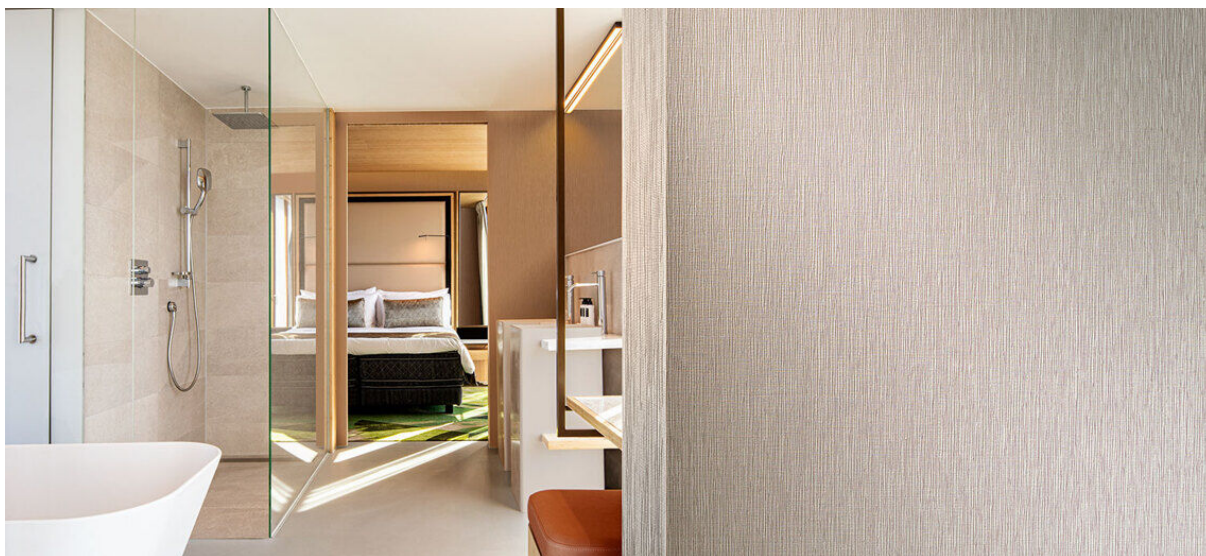


# wutai

1105.01 - 1105.14



colección  
**wallcovering  
vinyl**

descripción  
**textura mate, vertical y orgánica inspirada  
en la madera y la corteza de árbol en tonos  
naturales**

composición  
**capa vinílica estampada con tintas al agua,  
sobre soporte de algodón**

ancho  
**± 130 cm, ± 51 inches**

peso  
**± 550 gr/m<sup>2</sup>, ± 23 oz/yd<sup>1</sup>**

combustión retardada  
**EN 13501, B s2 d0  
ASTM E84, A  
NFPA 286**

insensibilidad a la luz  
**ISO 105-B02  
8 (scale 1-8)  
CCC-W-408D**

type II

permeabilidad al vapor de agua  
**ISO 15106-3 / EN ISO 12572  
Sd value ± 9,5 m**

**vinyl**   
COMMITTED TO  
SUSTAINABLE DEVELOPMENT

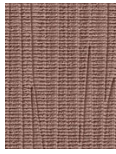
**CE** EN 15102



# wutai

1105.01 - 1105.14

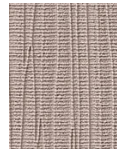
---



1105.01



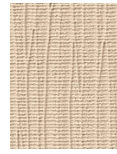
1105.02



1105.03



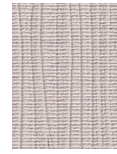
1105.04



1105.05



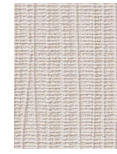
1105.06



1105.07



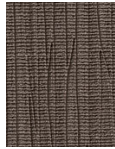
1105.08



1105.09



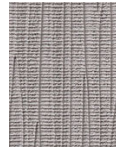
1105.10



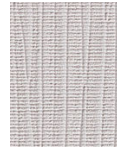
1105.11



1105.12



1105.13



1105.14