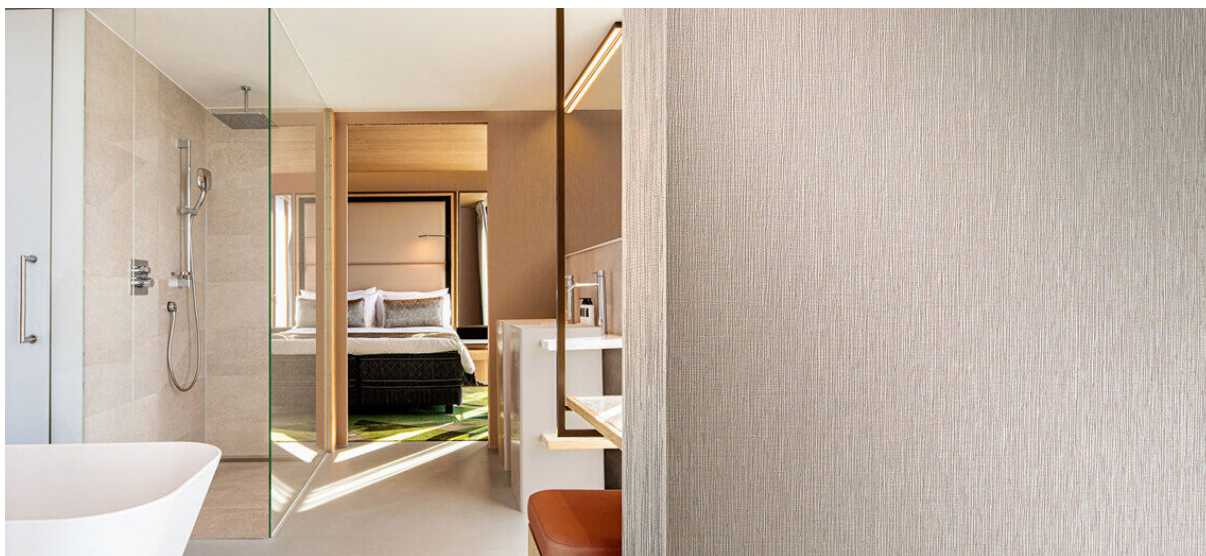


wutai

1105.01 - 1105.14



collectie
wallcovering
vinyl

omschrijving
matte, verticale, organische nerf
geïnspireerd op hout en boomschors in
natuurlijke tonen

samenstelling
vinyl deklaag bedrukt met inkten op
waterbasis, katoenen drager

breedte
± 130 cm, ± 51 inches

gewicht
± 550 gr/m², ± 23 oz/yd¹

brandwerendheid
EN 13501, B s2 d0
ASTM E84, A
NFPA 286

lichtechtheid
ISO 105-B02
8 (scale 1-8)
CCC-W-408D

type II

waterdampdoorlaatbaarheid
ISO 15106-3 / EN ISO 12572
Sd waarde ± 9,5 m

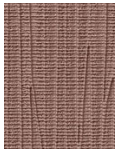
vinyl  COMMITTED TO
SUSTAINABLE DEVELOPMENT

CE EN 15102



wutai

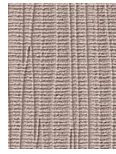
1105.01 - 1105.14



1105.01



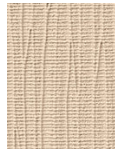
1105.02



1105.03



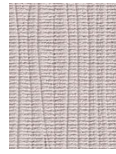
1105.04



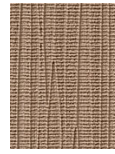
1105.05



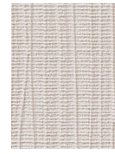
1105.06



1105.07



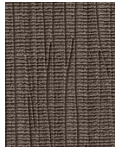
1105.08



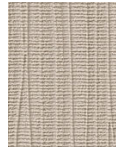
1105.09



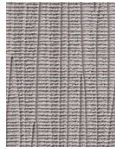
1105.10



1105.11



1105.12



1105.13



1105.14