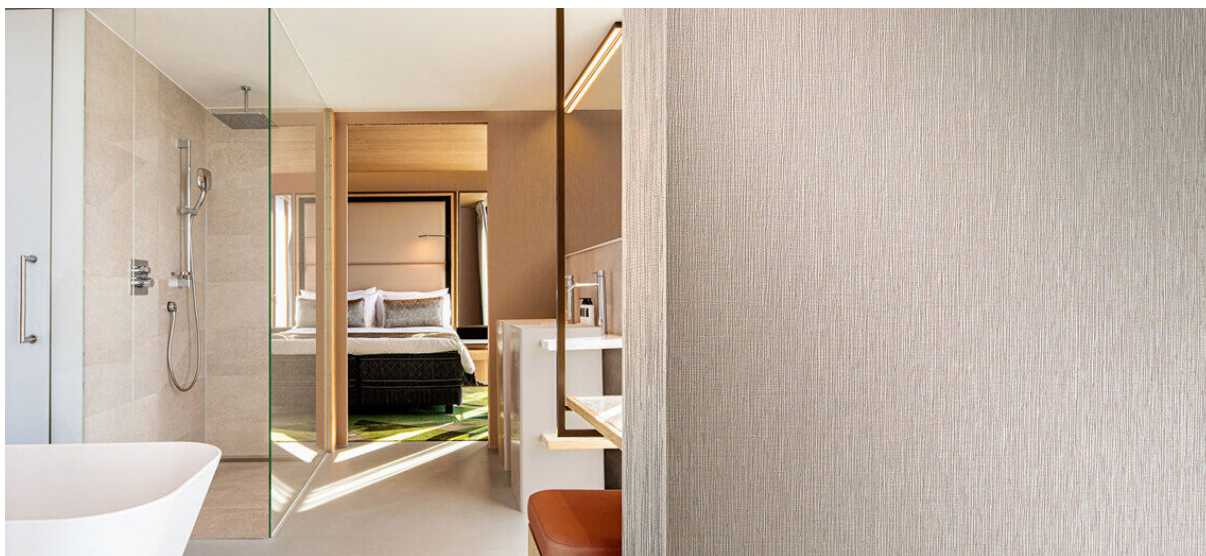


# wutai

1105.01 - 1105.14



coleção  
wallcovering  
vinyl

descrição  
**textura fosca, vertical, orgânica, inspirada em madeira e córtex de árvore em tons naturais**

composição  
**camada vinilica estampada com tintas à base de água e base de algodão**

largura  
**± 130 cm, ± 51 inches**

gramagem  
**± 550 gr/m<sup>2</sup>, ± 23 oz/yd<sup>1</sup>**

resistência ao fogo  
**EN 13501, B s2 d0  
ASTM E84, A  
NFPA 286**

resistência à luz  
**ISO 105-B02  
8 (scale 1-8)  
CCC-W-408D**

type II

permeabilidade ao vapor de água  
**ISO 15106-3 / EN ISO 12572**  
Sd value ± 9,5 m

vinyl  COMMITTED TO SUSTAINABLE DEVELOPMENT

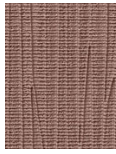
CE EN 15102



# wutai

1105.01 - 1105.14

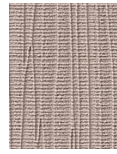
---



1105.01



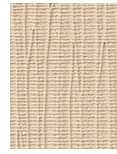
1105.02



1105.03



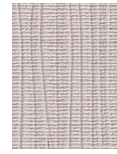
1105.04



1105.05



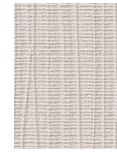
1105.06



1105.07



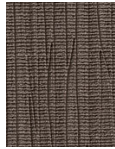
1105.08



1105.09



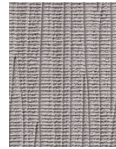
1105.10



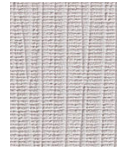
1105.11



1105.12



1105.13



1105.14