

eurolin

2620.00 – 2620.09



collection
**wallcovering
textile**

description
**coarsely woven linen in neutral, irregular
washed shades**

composition
100% linen on a paper backing

width
± 137 cm, ± 54 inches

weight
± 715 gr/m², ± 32 oz/yd¹

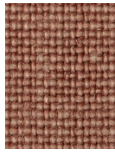
flame retardancy
**EN 13501, B s1 d0
ASTM E84, A**

water vapor permeability
ISO 15106-3 / EN ISO 12572
Sd value <0,5 m



eurolin

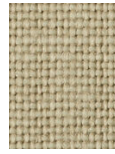
2620.00 – 2620.09



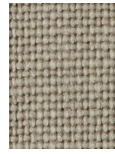
2620.00



2620.01



2620.02



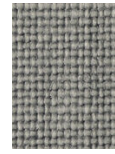
2620.03



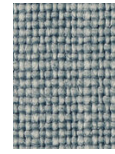
2620.04



2620.05



2620.06



2620.07



2620.08



2620.09