

casalin

2620.50 – 2620.59



kolekcji
**wallcovering
textile**

opis
**rustykalny wielobarwny melanz lnu,
bawełny i poliestru z efektem połysku**

skład
**60% len / 21% bawełna / 19% poliester na
nośniku papierowym**

szerokość
± 137 cm, ± 54 inches

gramatura
± 445 gr/m², ± 20 oz/yd¹

odporność ogniowa
**EN 13501, B s2 d0
ASTM E84, A**

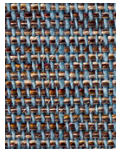
przepuszczalność pary wodnej
ISO 15106-3 / EN ISO 12572
Sd value <0,5 m

CE EN 15102

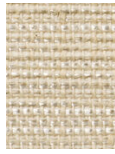


casalin

2620.50 – 2620.59



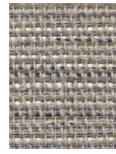
2620.50



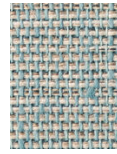
2620.51



2620.52



2620.53



2620.54



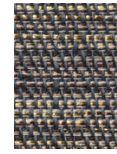
2620.55



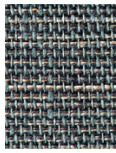
2620.56



2620.57



2620.58



2620.59