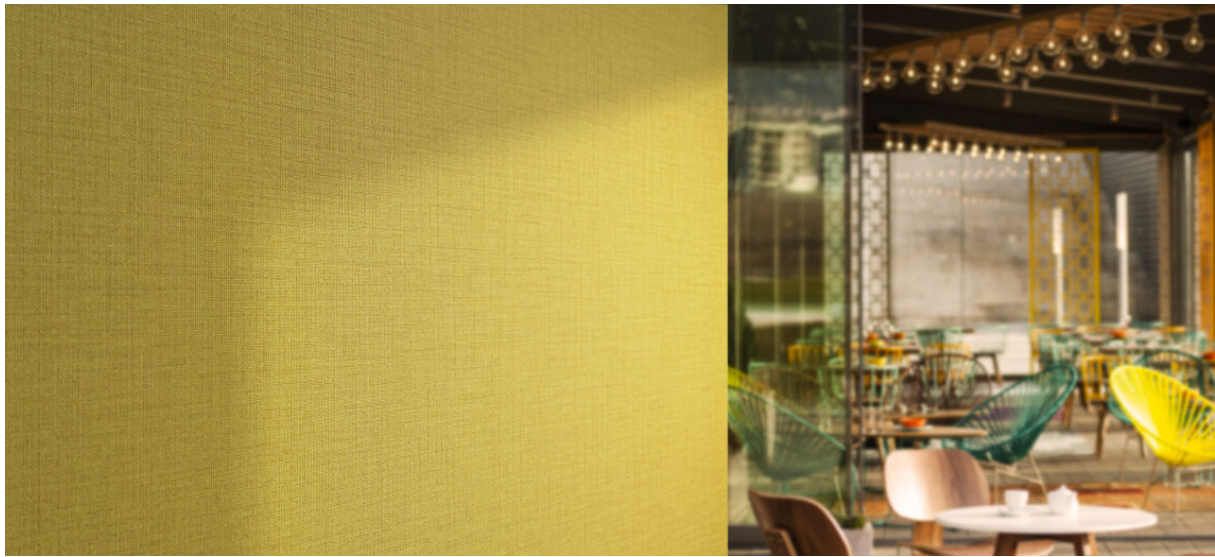


# silā

1109.01 - 1109.25



Kollektion  
**wallcovering  
vinyl**

Beschreibung  
**Bi-Color-Feinleinenstruktur mit dezentem  
Glanz**

Zusammensetzung  
**Vinyl-Deckschicht bedruckt mit Farben auf  
Wasserbasis, Baumwollträger**

Breite  
**± 130 cm, ± 51 inches**

Gewicht  
**± 350 gr/m<sup>2</sup>, ± 15 oz/yd<sup>1</sup>**

Schallabsorption

**ISO 354**

alphaw 0.10

**ASTM C423**

nrc 0.10

Brandschutzklasse

**EN 13501, B s1 d0**

**ASTM E84, A**

**IMO 2010 FTP part 2-5**

Lichtechtheit

**ISO 105-B02**

7 (scale 1-8)

**CCC-W-408D**

type II

Wasserdampfdurchlässigkeit

**ISO 15106-3 / EN ISO 12572**

Sd Wert ± 9 m



vinyl COMMITTED TO  
SUSTAINABLE DEVELOPMENT

CE EN 15102



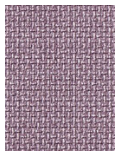
# silā

1109.01 - 1109.25

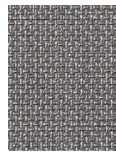
---



1109.01



1109.02



1109.03



1109.04



1109.05



1109.06



1109.07



1109.08



1109.09



1109.10



1109.11



1109.12



1109.13



1109.14



1109.15



1109.16



1109.17



1109.18



1109.19



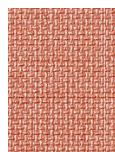
1109.20



1109.21



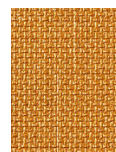
1109.22



1109.23



1109.24



1109.25