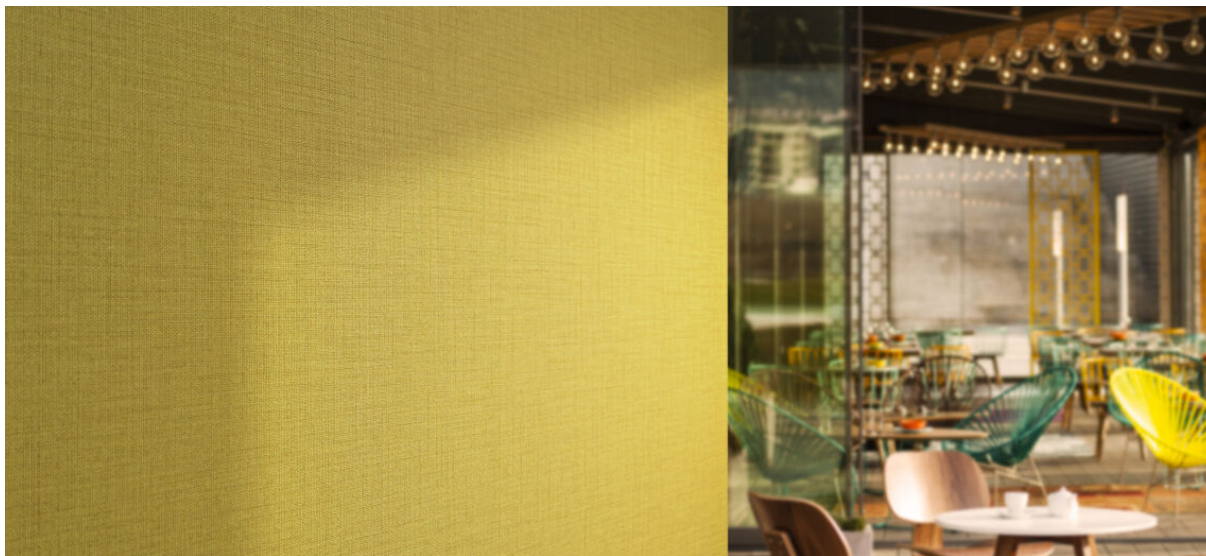


sila

1109.01 - 1109.25



colección

**wallcovering
vinyl**

descripción

**estructura de lino fino bicolor, no direccional,
con un sutil brillo**

composición

**capa vinílica estampada con tintas al agua,
sobre soporte de algodón**

ancho

± 130 cm, ± 51 inches

peso

± 350 gr/m², ± 15 oz/yd¹

absorción del ruido

ISO 354

alphaw 0.10

ASTM C423

nrc 0.10

combustión retardada

EN 13501, B s1 d0

ASTM E84, A

IMO 2010 FTP part 2-5

insensibilidad a la luz

ISO 105-B02

7 (scale 1-8)

CCC-W-408D

type II

permeabilidad al vapor de agua

ISO 15106-3 / EN ISO 12572

Sd value ± 9 m



vinyl COMMITTED TO SUSTAINABLE DEVELOPMENT

CE EN 15102

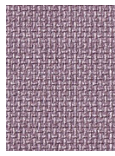


silā

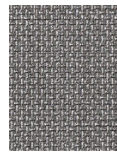
1109.01 - 1109.25



1109.01



1109.02



1109.03



1109.04



1109.05



1109.06



1109.07



1109.08



1109.09



1109.10



1109.11



1109.12



1109.13



1109.14



1109.15



1109.16



1109.17



1109.18



1109.19



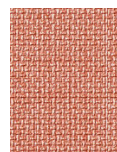
1109.20



1109.21



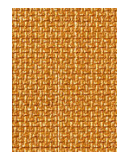
1109.22



1109.23



1109.24



1109.25