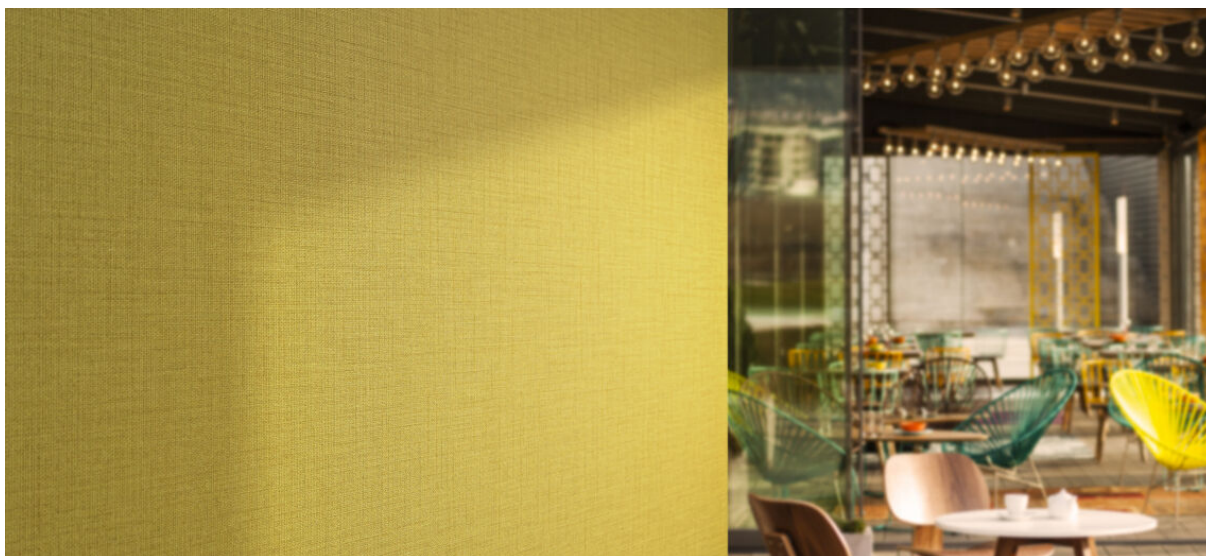


# silā

1109.01 - 1109.25



collectie

**wallcovering  
vinyl**

omschrijving

**tweekleurige, richtingloze fijne  
linnenstructuur met een subtiele glans**

samenstelling

**vinyl deklaag bedrukt met inkten op  
waterbasis, katoenen drager**

breedte

**± 130 cm, ± 51 inches**

gewicht

**± 350 gr/m<sup>2</sup>, ± 15 oz/yd<sup>1</sup>**

geluidsabsorptie

**ISO 354**

alphaw 0.10

**ASTM C423**

nrc 0.10

brandwerendheid

**EN 13501, B s1 d0**

**ASTM E84, A**

**IMO 2010 FTP part 2-5**

lichtechtheid

**ISO 105-B02**

7 (scale 1-8)

**CCC-W-408D**

type II

waterdampdoorlaatbaarheid

**ISO 15106-3 / EN ISO 12572**

Sd waarde ± 9 m



**vinyl** COMMITTED TO  
SUSTAINABLE DEVELOPMENT

**CE** EN 15102



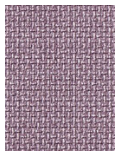
# silva

1109.01 - 1109.25

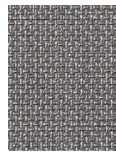
---



1109.01



1109.02



1109.03



1109.04



1109.05



1109.06



1109.07



1109.08



1109.09



1109.10



1109.11



1109.12



1109.13



1109.14



1109.15



1109.16



1109.17



1109.18



1109.19



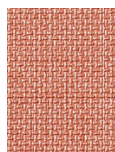
1109.20



1109.21



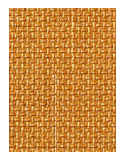
1109.22



1109.23



1109.24



1109.25