

silā

1109.01 - 1109.25



系列

wallcovering
vinyl

描述

双色且微妙光泽的无方向性亚麻结构

组成

布底胶面,水性涂料印染

宽度

± 130 cm, ± 51 inches

重量

± 350 gr/m², ± 15 oz/yd¹

吸声系数

ISO 354

alphaw 0,10

ASTM C423

nrc 0,10

阻燃

EN 13501, B s1 d0

ASTM E84, A

IMO 2010 FTP part 2—5

耐褪色

ISO 105—B02

7 (scale 1—8)

CCC—W—408D

type II

水蒸气渗透性

ISO 15106-3 / EN ISO 12572

Sd value ± 9 m



vinyl COMMITTED TO SUSTAINABLE DEVELOPMENT

CE EN 15102

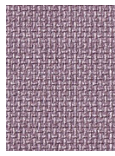


silā

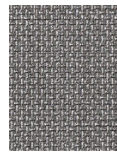
1109.01 - 1109.25



1109.01



1109.02



1109.03



1109.04



1109.05



1109.06



1109.07



1109.08



1109.09



1109.10



1109.11



1109.12



1109.13



1109.14



1109.15



1109.16



1109.17



1109.18



1109.19



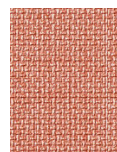
1109.20



1109.21



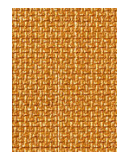
1109.22



1109.23



1109.24



1109.25