

meteor

2549.01 - 2549.61



collection

wallcovering
textile
xorel

description

(semi) uni smooth fabric

composition

100% ifr xorel (polyethylene) on x-protect wall™ (paper backing)

width

± 132 cm, ± 52 inches

weight

± 378 gr/m², ± 16 oz/yd¹

flame retardancy

EN 13501, B s1 d0
ASTM E84, A

water vapor permeability

ISO 15106-3 / EN ISO 12572

Sd value <0,5 m

additional information

Cradle to Cradle® Silver certified

Xorel is a registered trademark and license to distribute is granted by permission of Carnegie Fabrics Inc. US



meteor

2549.01 - 2549.61



2549.01



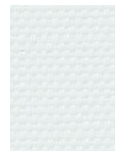
2549.02



2549.03



2549.04



2549.05



2549.06



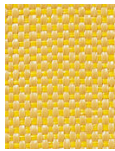
2549.07



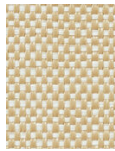
2549.08



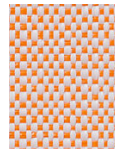
2549.09



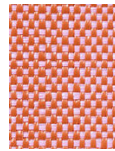
2549.10



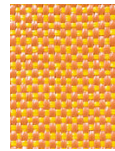
2549.11



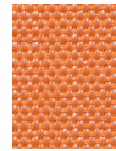
2549.12



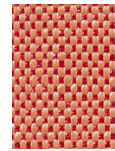
2549.13



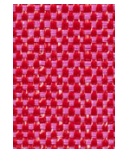
2549.14



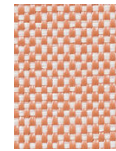
2549.15



2549.16



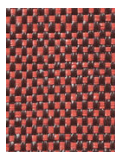
2549.17



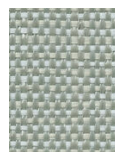
2549.18



2549.19



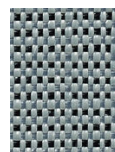
2549.20



2549.21



2549.22



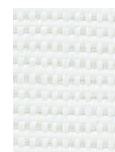
2549.23



2549.24



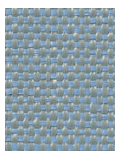
2549.25



2549.26



2549.27



2549.28



2549.29



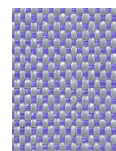
2549.30



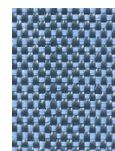
2549.31



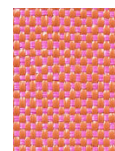
2549.32



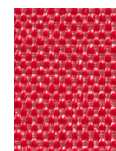
2549.33



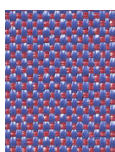
2549.34



2549.35



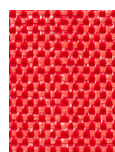
2549.36



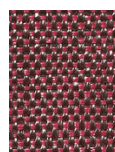
2549.37



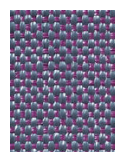
2549.38



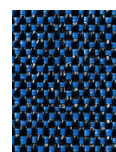
2549.39



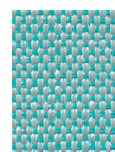
2549.40



2549.41



2549.42



2549.43



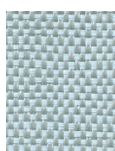
2549.44



2549.45



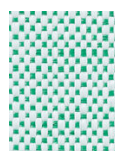
2549.46



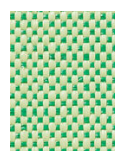
2549.47



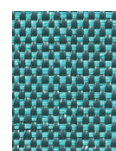
2549.48



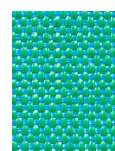
2549.49



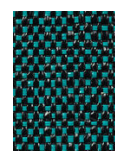
2549.50



2549.51



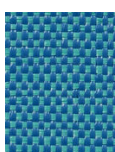
2549.52



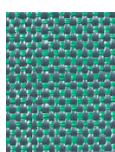
2549.53



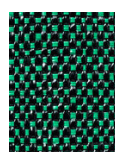
2549.54



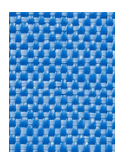
2549.55



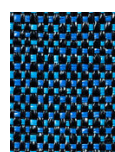
2549.56



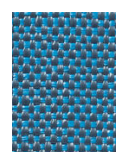
2549.57



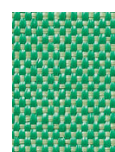
2549.58



2549.59



2549.60



2549.61