

rebun

1112.01 - 1112.23



collection

**wallcovering
vinyl**

description

**coarse-weave linen structure with a matte,
irregular look**

composition

**vinyl finishing coat on a woven cotton
backing**

width

± 130 cm, ± 51 inches

weight

± 440 gr/m², ± 18 oz/yd¹

sound absorption

ISO 354

alphaw 0.10

ASTM C423

nrc 0.10

flame retardancy

EN 13501, B s2 d0

ASTM E84, A

NFPA 286

colorfastness to light

ISO 105-B02

8 (scale 1-8)

CCC-W-408D

type II

water vapor permeability

ISO 15106-3 / EN ISO 12572

Sd value ± 9 m

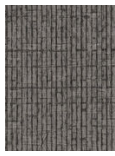
vinyl  COMMITTED TO
SUSTAINABLE DEVELOPMENT

CE EN 15102



rebun

1112.01 - 1112.23



1112.01



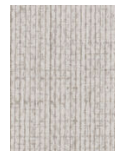
1112.02



1112.03



1112.04



1112.05



1112.06



1112.07



1112.08



1112.09



1112.10



1112.11



1112.12



1112.13



1112.14



1112.15



1112.16



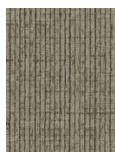
1112.17



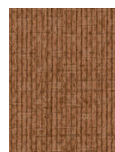
1112.18



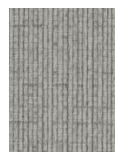
1112.19



1112.20



1112.21



1112.22



1112.23