

# rebun

1112.01 - 1112.23



coleção

wallcovering  
vinyl

descrição

estrutura de linho de trama espessa com  
aspecto fosco irregular

composição

camada vinílica estampada com tintas à  
base de água e base de algodão

largura

± 130 cm, ± 51 inches

gramagem

± 440 gr/m<sup>2</sup>, ± 18 oz/yd<sup>1</sup>

absorção acústica

**ISO 354**

alphaw 0.10

**ASTM C423**

nrc 0.10

resistência ao fogo

**EN 13501, B s2 d0**

**ASTM E84, A**

**NFPA 286**

resistência à luz

**ISO 105-B02**

8 (escala 1-8)

**CCC-W-408D**

type II

permeabilidade ao vapor de água

**ISO 15106-3 / EN ISO 12572**

Sd value ± 9 m

vinyl  COMMITTED TO  
SUSTAINABLE DEVELOPMENT

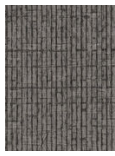
CE EN 15102



# rebun

1112.01 - 1112.23

---



1112.01



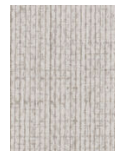
1112.02



1112.03



1112.04



1112.05



1112.06



1112.07



1112.08



1112.09



1112.10



1112.11



1112.12



1112.13



1112.14



1112.15



1112.16



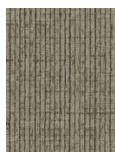
1112.17



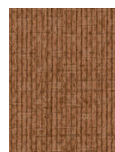
1112.18



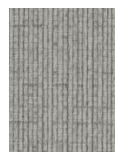
1112.19



1112.20



1112.21



1112.22



1112.23