

kilby

1113.01 - 1113.33



colección
wallcovering
vinyl

descripción
estructura de tejido de lino bicolor, no
direccional, con aspecto mate

composición
capa vinílica estampada con tintas al agua,
sobre soporte de algodón

ancho
± 130 cm, ± 51 inches

peso
± 350 gr/m², ± 15 oz/yd¹

absorción del ruido

ISO 354

alphaw 0.10

ASTM C423

nrc 0.10

combustión retardada

EN 13501, B s1 d0

IMO 2010 FTP part 2-5

ASTM E84, A

NFPA 286

insensibilidad a la luz

ISO 105-B02

8 (escala 1-8)

CCC-W-408D

type II

permeabilidad al vapor de agua

ISO 15106-3 / EN ISO 12572

Sd value ± 9 m



vinyl 
COMMITTED TO
SUSTAINABLE DEVELOPMENT

CE EN 15102



kilby

1113.01 - 1113.33



1113.01



1113.02



1113.03



1113.04



1113.05



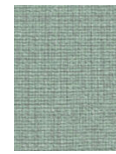
1113.06



1113.07



1113.08



1113.09



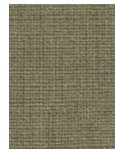
1113.10



1113.11



1113.12



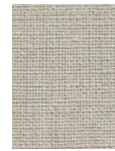
1113.13



1113.14



1113.15



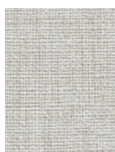
1113.16



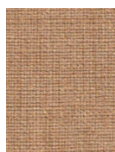
1113.17



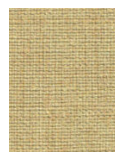
1113.18



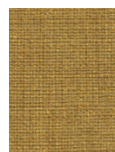
1113.19



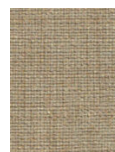
1113.20



1113.21



1113.22



1113.23



1113.24



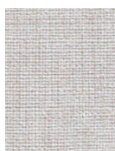
1113.25



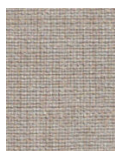
1113.26



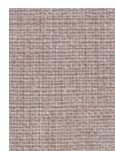
1113.27



1113.28



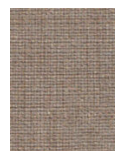
1113.29



1113.30



1113.31



1113.32



1113.33