

# kilby

1113.01 - 1113.33



collezione  
**wallcovering**  
**vinyl**

permeabilità al vapore acqueo  
**ISO 15106-3 / EN ISO 12572**  
Sd value  $\pm$  9 m

descrizione  
**struttura opaca effetto lino duo-tone**

composizione  
**tessuto in puro cotone con spalmatura di  
monomeri vinilici completamente  
polimerizzati, stampato con inchiostri a base  
acquosa**

altezza  
 **$\pm$  130 cm,  $\pm$  51 inches**

peso  
 **$\pm$  350 gr/m<sup>2</sup>,  $\pm$  15 oz/yd<sup>1</sup>**

assorbimento del suono  
**ISO 354**

alphaw 0.10  
**ASTM C423**  
nrc 0.10

resistenza al fuoco  
**EN 13501, B s1 d0**  
**IMO 2010 FTP part 2-5**  
**ASTM E84, A**  
**NFPA 286**

resistenza alla luce  
**ISO 105-B02**  
8 (scala 1-8)  
**CCC-W-408D**  
type II



**vinyl** COMMITTED TO SUSTAINABLE DEVELOPMENT

**CE** EN 15102



# kilby

1113.01 - 1113.33

---



1113.01



1113.02



1113.03



1113.04



1113.05



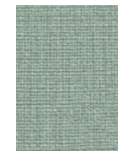
1113.06



1113.07



1113.08



1113.09



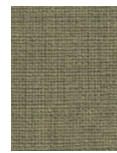
1113.10



1113.11



1113.12



1113.13



1113.14



1113.15



1113.16



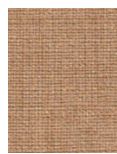
1113.17



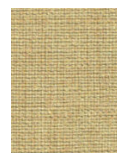
1113.18



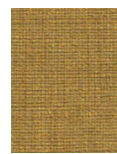
1113.19



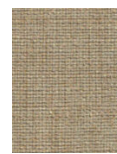
1113.20



1113.21



1113.22



1113.23



1113.24



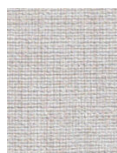
1113.25



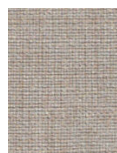
1113.26



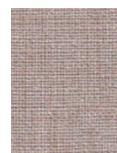
1113.27



1113.28



1113.29



1113.30



1113.31



1113.32



1113.33