

kilby

1113.01 - 1113.33



coleção
wallcovering
vinyl

permeabilidade ao vapor de água
ISO 15106-3 / EN ISO 12572
Sd value \pm 9 m

descrição
estrutura de tecelagem de linho em dois tons, não direcional, com um aspeto mate

composição
camada vinílica estampada com tintas à base de água e base de algodão

largura
 \pm 130 cm, \pm 51 inches

gramagem
 \pm 350 gr/m², \pm 15 oz/yd¹

absorção acústica

ISO 354

alphaw 0.10

ASTM C423

nrc 0.10

resistência ao fogo

EN 13501, B s1 d0

IMO 2010 FTP part 2-5

ASTM E84, A

NFPA 286

resistência à luz

ISO 105-B02

8 (escala 1-8)

CCC-W-408D

type II



vinyl 
COMMITTED TO
SUSTAINABLE DEVELOPMENT

CE EN 15102



kilby

1113.01 - 1113.33



1113.01



1113.02



1113.03



1113.04



1113.05



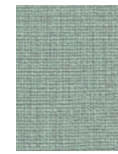
1113.06



1113.07



1113.08



1113.09



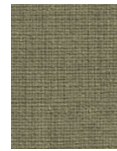
1113.10



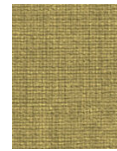
1113.11



1113.12



1113.13



1113.14



1113.15



1113.16



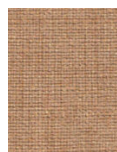
1113.17



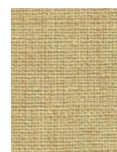
1113.18



1113.19



1113.20



1113.21



1113.22



1113.23



1113.24



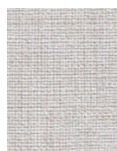
1113.25



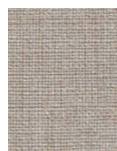
1113.26



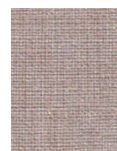
1113.27



1113.28



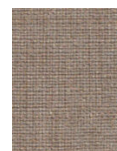
1113.29



1113.30



1113.31



1113.32



1113.33