

kilby

1113.01 - 1113.33



系列

wallcovering
vinyl

描述

双色无方向性哑光亚麻编织结构外观

组成

布底胶面, 水性涂料印染

宽度

± 130 cm, ± 51 inches

重量

± 350 gr/m², ± 15 oz/yd¹

吸声系数

ISO 354

alphaw 0,10

ASTM C423

nrc 0,10

阻燃

EN 13501, B s1 d0

IMO 2010 FTP part 2—5

ASTM E84, A

NFPA 286

耐褪色

ISO 105—B02

8 (由 1—8)

CCC—W—408D

type II

水蒸气渗透性

ISO 15106-3 / EN ISO 12572

Sd value ± 9 m



vinyl  COMMITTED TO
SUSTAINABLE DEVELOPMENT

CE EN 15102



kilby

1113.01 - 1113.33



1113.01



1113.02



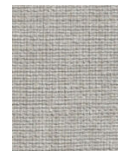
1113.03



1113.04



1113.05



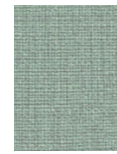
1113.06



1113.07



1113.08



1113.09



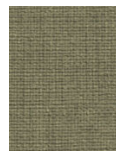
1113.10



1113.11



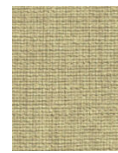
1113.12



1113.13



1113.14



1113.15



1113.16



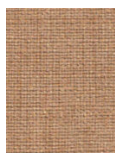
1113.17



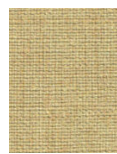
1113.18



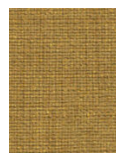
1113.19



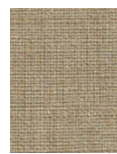
1113.20



1113.21



1113.22



1113.23



1113.24



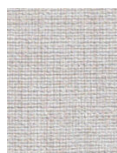
1113.25



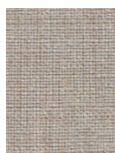
1113.26



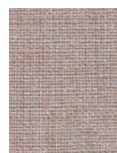
1113.27



1113.28



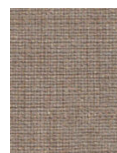
1113.29



1113.30



1113.31



1113.32



1113.33