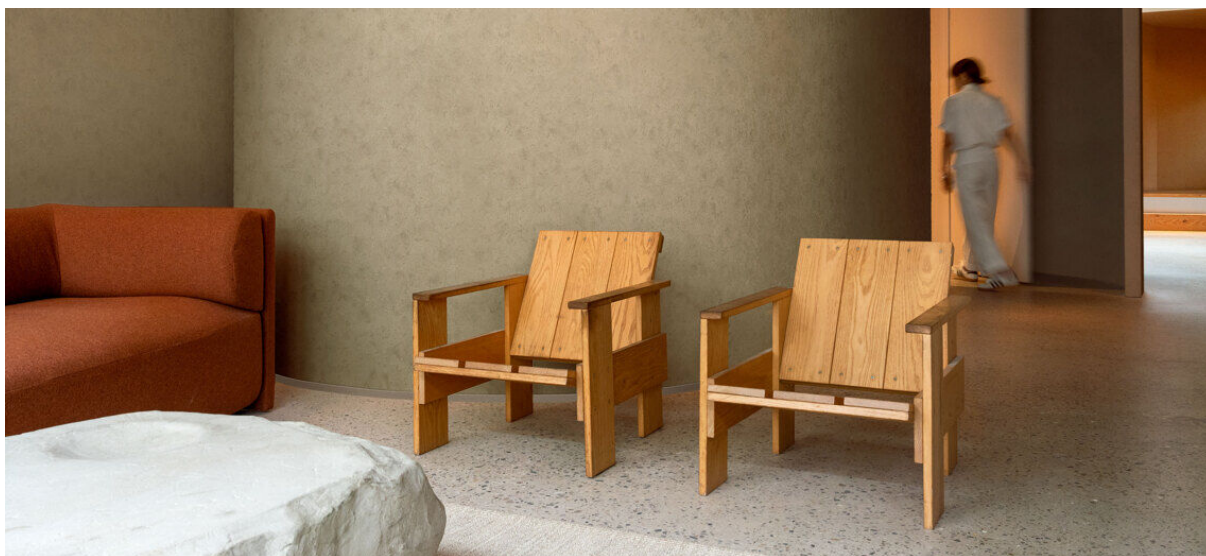


moon

1115.01 - 1115.09



collezione
wallcovering
vinyl

descrizione

rivestimento murale in vinile riciclato ispirato a superfici irregolari come pietra e argilla, in tonalità opache, terrose o delicatamente metalliche

composizione

rivestimento murale vinilico con contenuto riciclato del 13% su un supporto in cotone

altezza

± 130 cm, ± 51 inches

peso

± 490 gr/m², ± 21 oz/yd¹

resistenza al fuoco

EN 13501, B s2 d0

ASTM E84, A

resistenza alla luce

ISO 105-B02

7-8 (scala 1-8)

permeabilità al vapore acqueo

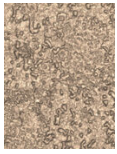
ISO 15106-3 / EN ISO 12572

Sd value ± 9 m



moon

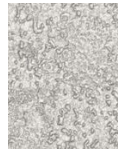
1115.01 - 1115.09



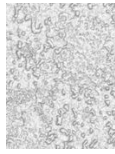
1115.01



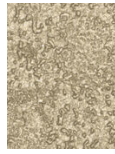
1115.02



1115.03



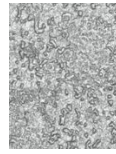
1115.04



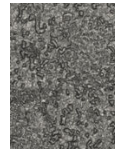
1115.05



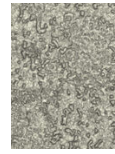
1115.06



1115.07



1115.08



1115.09