

moon

1115.01 - 1115.09



系列

wallcovering

vinyl

描述

Moon 灵感源自石材和粘土的哑光柔软金属色调再生膨

组成

13%再生成分的棉布基底胶面墙布

宽度

± 130 cm, ± 51 inches

重量

± 490 gr/m², ± 21 oz/yd¹

阻燃

EN 13501, B s2 d0

ASTM E84, A

耐褪色

ISO 105-B02

7-8 (由 1-8)

水蒸气渗透性

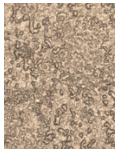
ISO 15106-3 / EN ISO 12572

Sd value ± 9 m



moon

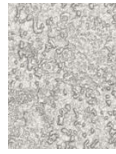
1115.01 - 1115.09



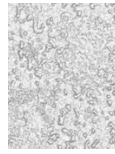
1115.01



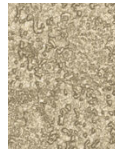
1115.02



1115.03



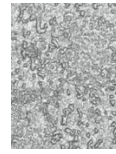
1115.04



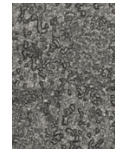
1115.05



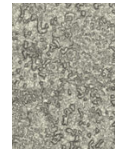
1115.06



1115.07



1115.08



1115.09