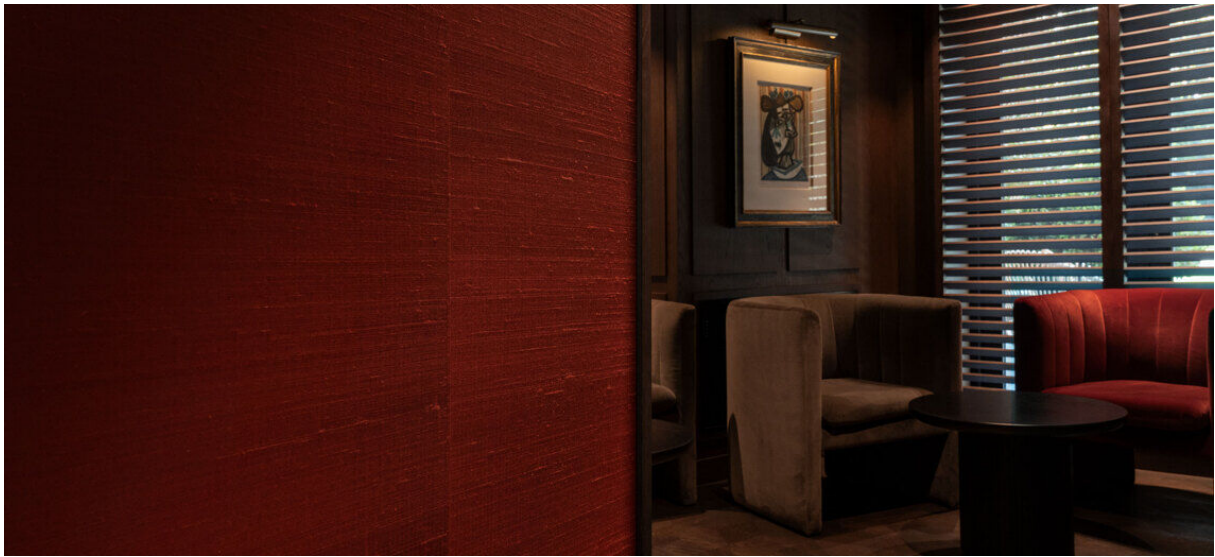


ganzu

2104.01 – 2104.16



collection
wallcovering
textile

description
100% refined silk wallcovering with a luxurious soft sheen and an irregular horizontal weave effect in rich and elegant colours

composition
100% silk on a non-woven backing

width
± 51 inches, ± 130 cm

weight
± 8 oz/yd¹, ± 200 gr/m²

flame retardancy
ASTM E84, class A
EN 13501, B s1 d0
IMO 2010 FTP part 2 – 5

colorfastness to light
AATCC 16.3: 40 hours
5 (scale 1–5)
ISO 105-B02
6 (scale 1–8)

water vapor permeability
ISO 15106-3 / EN ISO 12572
Sd value <0,5 m



CE EN 15102



ganzu

2104.01 – 2104.16



2104.01



2104.02



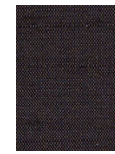
2104.03



2104.04



2104.05



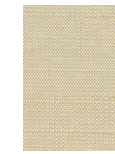
2104.06



2104.07



2104.08



2104.09



2104.10



2104.11



2104.12



2104.13



2104.14



2104.15



2104.16