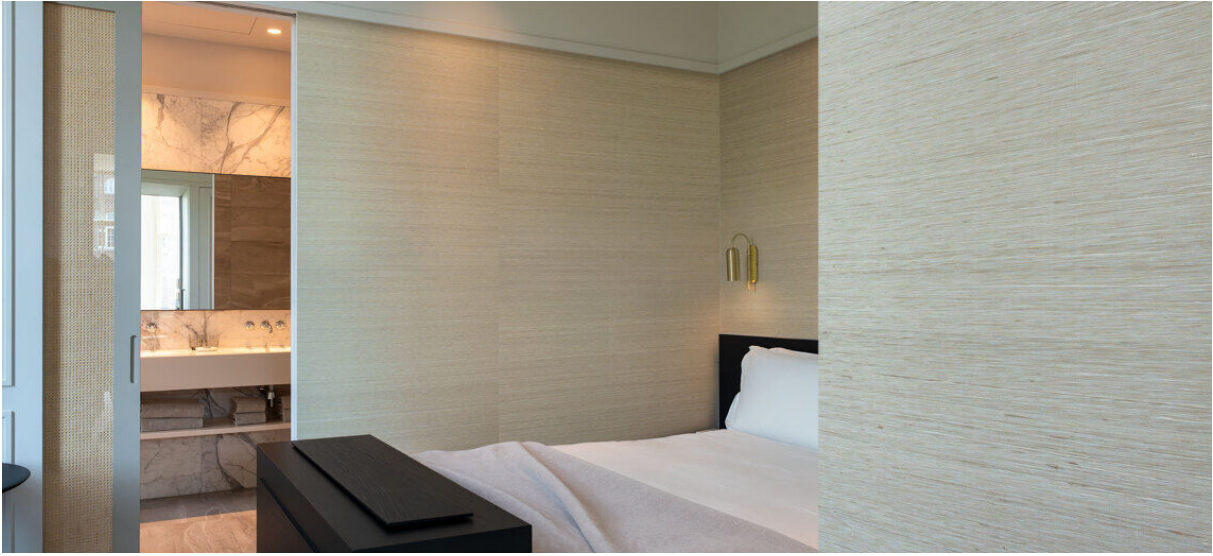


sinkiang

2105.01 – 2105.09



collection
wallcovering
textile

description
100% rough silk wallcovering with a matte two-tonal irregular and handcrafted look by using a horizontal slub yarn

composition
100% silk on a non-woven backing

width
± 130 cm, ± 51 inches

weight
± 230 gr/m², ± 10 oz/yd¹

flame retardancy
EN 13501, B s1 d0
IMO 2010 FTP part 2 – 5
ASTM E84, class A

colorfastness to light
ISO 105-B02
6 (scale 1–8)
AATCC 16.3: 40 hours
4.5 (scale 1–5)

water vapor permeability
ISO 15106-3 / EN ISO 12572
Sd value <0,5 m

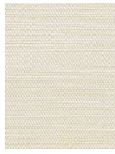


sinkiang

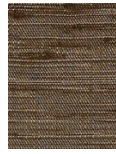
2105.01 – 2105.09



2105.01



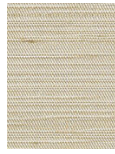
2105.02



2105.03



2105.04



2105.05



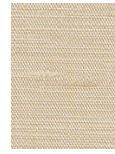
2105.06



2105.07



2105.08



2105.09