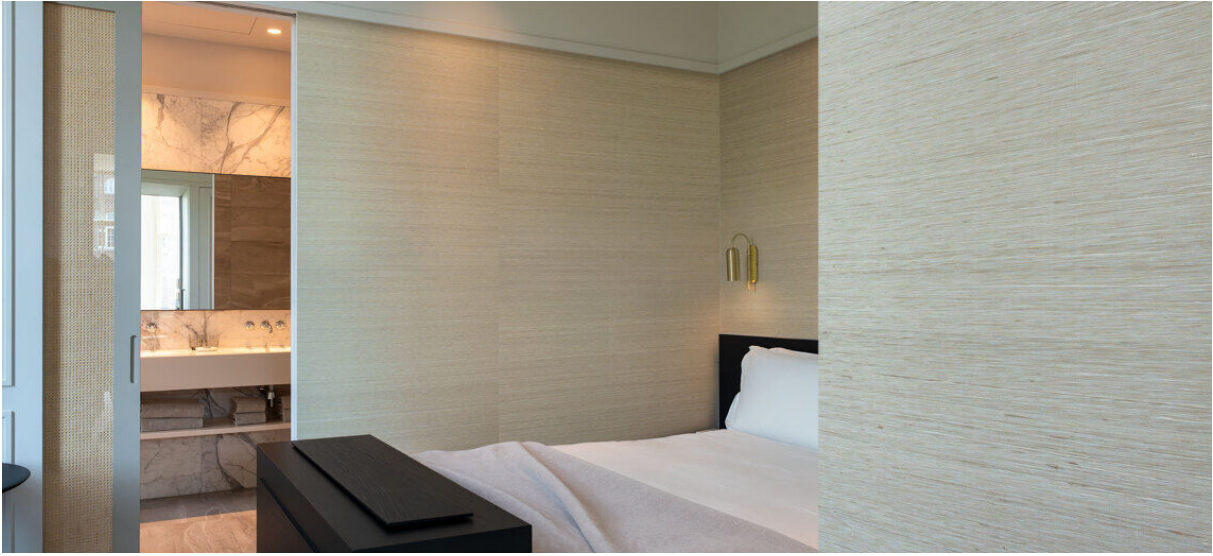


sinkiang

2105.01 – 2105.09



collection
**wallcovering
textile**

description
**revêtement mural en 100 % soie brute avec
un aspect mat, irrégulier et bicolore,
réalisé à la main à l'aide d'un fil de
trame horizontal**

composition
100% silk on a non-woven backing

largeur
± 130 cm, ± 51 inches

poids
± 230 gr/m², ± 10 oz/yd¹

non feu
**EN 13501, B s1 d0
IMO 2010 FTP part 2 – 5
ASTM E84, class A**

solidité lumière
**ISO 105-B02
6 (scale 1–8)
AATCC 16.3: 40 hours
4.5 (scale 1–5)**

perméabilité à la vapeur d'eau
**ISO 15106-3 / EN ISO 12572
Sd value <0,5 m**

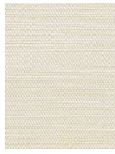


sinkiang

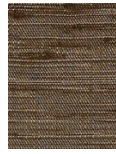
2105.01 – 2105.09



2105.01



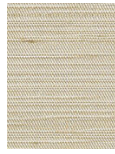
2105.02



2105.03



2105.04



2105.05



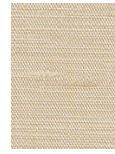
2105.06



2105.07



2105.08



2105.09