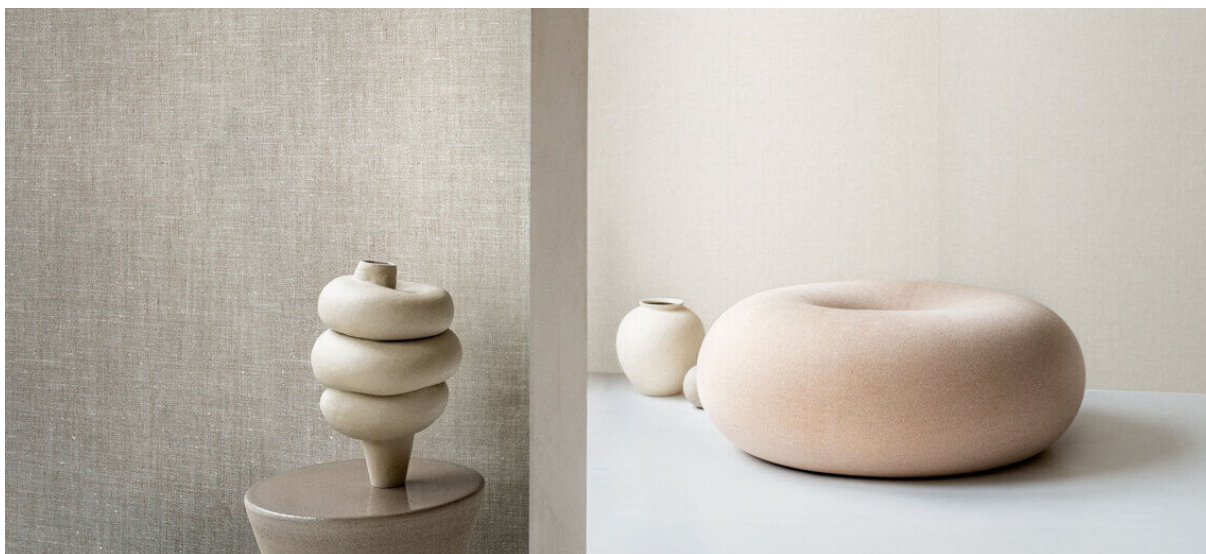


linosa

2106.01 – 2106.09



collection
**wallcovering
textile**

description
**bio-based linen wallcovering in both coarse
and fine weaves of different scales in neutral
tones**

composition
100% linen on a paper backing

width
± 54 inches, ± 137 cm

weight
± 22 oz/yd¹, ± 500 gr/m²

flame retardancy
**ASTM E84, class A
EN 13501, B s1 d0**

colorfastness to light
AATCC 16.3: 40 hours
5 (scale 1–5)
ISO 105-B02
7–8 (scale 1–8)

water vapor permeability
ISO 15106-3 / EN ISO 12572
Sd value <0,5 m

CE EN 15102



linosa

2106.01 – 2106.09



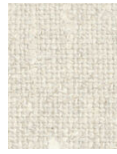
2106.01



2106.02



2106.03



2106.04



2106.05



2106.06



2106.07



2106.08



2106.09