

chandra

2623.50 – 2623.68



kolekcji
wallcovering
textile

opis
klasyczna tekstylna okleina ścienna ze
100% jedwabiu z nieregularnym poziomym
efektem przędzy w naturalnych odcieniach

skład
100% silk on a paper backing

szerokość
± 110 cm, ± 43 inches

gramatura
± 200 gr/m², ± 7 oz/yd¹

odporność ogniowa
EN 13501, B s1 d0
ASTM E84, class A

odporność na działanie światła
ISO 105-B02
6-7 (scale 1-8)

CE EN 15102



chandra

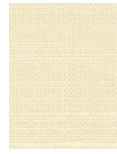
2623.50 – 2623.68



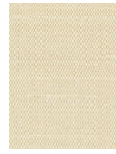
2623.50



2623.51



2623.52



2623.53



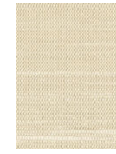
2623.54



2623.55



2623.56



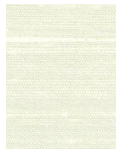
2623.57



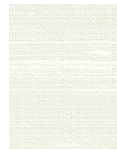
2623.58



2623.59



2623.60



2623.61



2623.62



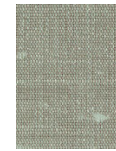
2623.63



2623.64



2623.65



2623.66



2623.67



2623.68