

nirmala

2623.00 – 2623.16



Kollektion
**wallcovering
textile**

Beschreibung
**Wandbekleidung aus Wildseide in einem
matten, zweifarbigen, handgefertigten Look,
deren horizontale Musterung durch
Effekt-Garne entsteht**

Zusammensetzung
**80% silk / 20% recycled polyester on a
paper backing**

Breite
± 110 cm, ± 43 inches

Gewicht
± 210 gr/m², ± 7 oz/yd¹

Brandschutzklasse
**EN 13501, B s1 d0
ASTM E84, class A**

Lichtechtheit
**ISO 105-B02
5-7 (scale 1-8)**

CE EN 15102

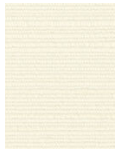


nirmala

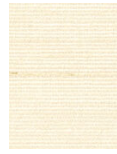
2623.00 – 2623.16



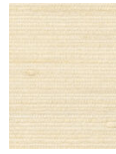
2623.00



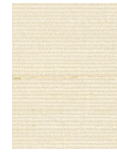
2623.01



2623.02



2623.03



2623.04



2623.05



2623.06



2623.07



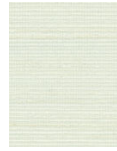
2623.08



2623.09



2623.10



2623.11



2623.12



2623.13



2623.14



2623.15



2623.16